



OCTOBER 30, 2021

# LEVELDALE

Investment Sale





# LEVELDALE

Investment Sale

## SALE CONTRIBUTORS



Leveldale Farms  
Les Mathers & Laura Conniff  
Les: 309.678.4230  
Herdsman, Rob Bruce: 217.737.0692  
[www.leveldale.com](http://www.leveldale.com)



Cagwin Farms - Don Cagwin  
Don: 217.341.7552  
Kerry: 217.370.6033 • Cindy: 217.370.6034  
Dalton: 217.416.9536  
[www.cagwincattle.com](http://www.cagwincattle.com)



Bowman Superior Genetics  
Phillip Bowman & Family  
765.886.5777  
cell: 765.967.7160  
[www.bowmansuperiorgenetics.com](http://www.bowmansuperiorgenetics.com)



Peak View Ranch  
Rick, Trish, Gabri & Val Leone  
719.263.4321  
Herdsman, Graham: 563.202.0740  
[www.peakviewranch.com](http://www.peakviewranch.com)



## SALE DAY INFORMATION

### Sale Location

29257 E County Rd 1250 N  
Mason City, IL 62664

### Sale Lodging

Hampton Inn  
1019 Heitmann Dr.  
Lincoln, Illinois 62656  
217.732.6729

### Auctioneer

Kevin Wendt • 419.566.1599

### Shorthorn Country Representative

Darryl Rahn • 217.473.1124

### Sale Consultants

Alan K Sears • 970.396.7521  
Stuart Wilson • 217.454.9355  
Brent Elam • 615.680.6189  
Chris Smith • 217.370.1908

### Sale Day Phone

Jeff Aegerter • 402.641.4696

### ASA Representatives

Montie Soules • 918.645.4322  
Matt Woolfolk • 713.694.6469

### Other Contacts

Rob Bruce • 217.737.0692  
Kerry Johnston • 217.370.6033  
Dalton Johnston • 217.416.9536

## BID ONLINE AT



## SCHEDULE OF EVENTS

### FRIDAY, OCTOBER 29

Sale Cattle Available for Viewing  
Dinner & Entertainment Highlighting Historical Memories

### SATURDAY, OCTOBER 30

Sale cattle on display in the morning & breakfast  
11:00 AM - Pre-sale Lunch  
12:00 PM - *Leveldale Investment Sale*

## SALE MANAGEMENT BY



### AEGERTER MARKETING SERVICES, INC

Jeff K. & Darla Aegerter  
402-641-4696  
jeff.aegerter@gmail.com  
www.aegertermarketing.com



### CAGWIN CATTLE SERVICES, LLC

Office: 217.452.3051  
Don Cagwin cell • 217.341.7552  
Cindy Cagwin-Johnston cell • 217.370.6034  
cagwincattle@casscomm.com

## TERMS & CONDITIONS

**PERFORMANCE DATA:** The Expected Progeny Differences (EPD's) represented in this catalog are generated through the American Shorthorn Association Digital Beef program and reflect the latest run as of September 6, 2021.

**Terms:** Terms of the sale are cash or check payable to the Sale Clerk. Cattle will not be released until payment or satisfactory arrangements for payment has been made and approved by the Sale Manager. The Sale Manager reserves the right to require a certified check as settlement before releasing any cattle. All lots offered sell under the standard terms and conditions endorsed by the American Shorthorn Association.

**Bidding:** All lots sold to the highest bidder. Any disputes or challenges regarding bids will be settled by the auctioneer. His decision will be final.

**Absentee Bidding:** If you will not be able to attend the sale, please contact the Sale Manager, Auctioneer or Sale Staff a day in advance in order to secure your bidder number and place your orders.

**Purchaser's Risk:** All animals become property of the buyer as soon as declared sold by the auctioneer, unless other arrangements are made prior to the sale.

**Health:** All animals will be accompanied by proper health certificates making them eligible for interstate shipment. Prospective buyers should make themselves aware of health requirements for their respective states.

**Breeding:** All animals sell under the terms and conditions of the American Shorthorn Association Standard Breeding Guarantee. Bred females have been pregnancy examined safe in calf by a licensed veterinarian. Any updated breeding information will be made available on sale day.

**Announcements:** Announcements from the auction block will take precedence over the printed material in this catalog and other announcements.

**Liabilities:** All persons who attend this sale do so at their own risk. The Sale Contributors or Sale Manager assumes no liabilities for any accidents that may occur. The auctioneer or Sale Manager assumes no liability for loss or injury to the livestock due to theft, mysterious disappearance, sickness, or improper handling.

**Registrations:** All animals selling are registered with the American Shorthorn Association unless otherwise stated. A certificate of registry and transfer will be furnished for each animal sold. It shall be the responsibility of the seller and/or sale manager to submit the properly prepared transfer application promptly to the American Shorthorn Association. The official ASA registration certificate is not a legal title or proof of ownership. The registration paper simply states who has ASA membership rights to control the registration of progeny associated with an individual registered animal along with the transfer of said rights to a new owner.

**Genetic Condition Disclaimer:** The seller is responsible for disclosure of all known Genetic Condition Abnormalities at the time of sale. Provided the seller has disclosed all Shorthorn Genetic Conditions known to the seller and /or to the Shorthorn breed at the time of sale, the buyer assumes all risk associated with the purchase of known or unknown Genetic Condition Abnormalities of carrier animals. The Seller is not responsible for any new Genetic Condition Abnormalities that may be determined or discovered by the ASA after the time of sale for any animal or genetic material.

**Trucking:** Each breeder will assist you in delivery.

**Leone will be heading west to Colorado with a trailer and Bowman East with a trailer to Indiana. A trailer will also be headed south towards Arkansas.**



# Welcome to LEVELDALE FARMS

In addition to Leveldale ---- Cagwin Farms, Bowman Superior Genetics, and Peak View Ranch are bringing you **VALUE ADDED GENETICS!**

Yes, at Leveldale we offer transformational cattle with great efficiency and individuals that can excel in the Show Ring as well as the Pasture!

Leveldale Farms has not used creep feeding for decades. You can see what you are getting with your purchases.....

**ATTRACTIVE and EFFICIENT Cattle.**

It is always a pleasure to gain new customers but we also love our old customers and multigenerational customers!

We will assist you with delivery on your Leveldale purchases. Immediately after the sale we will have a trailer going to Colorado and one to Indiana. We will assist with other transportation as needed.

We hope you can attend the **INVESTMENT** in person, but welcome you or your agents to see our cattle any time, In person, online, or on the phone.

Don't hesitate to contact Rob or me any time with questions.

Leveldale Farms - satisfied customers since 1852.

Les Mathers

VIDEOS AVAILABLE TO VIEW ONLINE AT [LEVELDALE.COM](http://LEVELDALE.COM)



**"YOU INVEST YOUR MONEY IN GOOD SHORTHORNS.  
YOU SPEND IT ON POOR ONES."**

[LEVELDALE.COM](http://LEVELDALE.COM)







LOT 2



LOT 1



Leveldale Chief -  
Owned by Alden Farms & Jordan Acres

Lot  
1

## LEVELDALE CASSANDRA 455B

X4212325 | COW | 3/27/14 | SH100 | POLLED | RED | 455B

SASKVALLEY RAMROD 155R  
STUDER'S TAYLOR MADE 7Y  
DSF COUNTRY DANCER 42U  
DRC 101VM  
LEVELDALE CASSANDRA 019X  
KL CASSANDRIA 125TH

Birth Wt: 79 | 205 Day Wt: 584 | 365 Day Wt: 746

CED	18	YG	-0.28
BW	-1.4	CW	-2
WW	55	REA	0.26
YW	78	MB	-0.05
MK	29	FAT	-0.06
TM	57	\$CEZ	59.62
CEM	11	\$BMI	157.29
ST	20	\$F	54.41

**Due to calve 2/6/22 to JSF Palermo, examined safe, PE Reload.**  
Beautiful designed mature cow here. This cow represents how we try to make them here at Leveldale. Huge center body, stout made and perfect at the ground. She hits the targets and raises top individuals annually. Leveldale Chief sold last year to Alden and Jordan Acres. She is also a maternal sister to Leveldale Cowboy Up sold to the Gilman Family. Bred safe to JSF Palermo makes the decision to put this one in the sale very difficult. 455 will be a great investment to any herd. This cow does it all.

Lot  
2

## LEVELDALE LADY SUPREME 727E

\*X4255092 | COW | 2/4/17 | SH98.44 | POLLED | RED | 727E

STUDER'S TAYLOR MADE 7Y  
LEVELDALE BOARDWALK 530C  
LEVELDALE BLOSSOM 230Z  
WAUKARU IMF 0080 ET  
EF LADY SUPREME 323  
EF LADY SUPREME 579

Birth Wt: 86 | 205 Day Wt: 594 | 365 Day Wt: 850

**Due to calve 1/15/22 to Marquis 127x safe, PE Reload.**  
727 is one of the most powerful Boardwalk heifers on the farm. Great from the side yet when you get behind her you're blown away with the amount of width and dimension she carries. I really feel this one will be a big generator down the road. Big time donor potential here.

CED	7	YG	-0.38
BW	3.7	CW	-1
WW	60	REA	0.51
YW	96	MB	-0.13
MK	20	FAT	-0.07
TM	50	\$CEZ	17.82
CEM	3	\$BMI	117.15
ST	16	\$F	55.84





LOT 3



LOT 4

Lot  
3

### LEVELDALE JANET 007H

\*X4304260 | COW | 1/3/20 | SH99.22 | POLLED | RED | 007H

EIONMOR MARQUIS 86G  
JSF MARQUIS 127X  
JSF MARVEL 12U  
STUDER'S TAYLOR MADE 7Y  
LEVELDALE JANET 473B  
GWENDOLINE JANET 577

CED	11	YG	-0.51
BW	2.6	CW	-4
VW	56	REA	0.71
YW	81	MB	-0.26
MK	27	FAT	-0.09
TM	54	\$CEZ	35.87
CEM	6	\$BMI	144
ST	14	\$F	52.39

Birth Wt: 94 | 205 Day Wt: 542 | 365 Day Wt: 742

**Due to calve 2/14/22 to Taylor Made, examined safe. PE Leveldale Lonny.** Pic says it all on this female. Freak fronted, bold centered and big footed. The kind you want in the front pasture. Very attractive for generations and great carcass data- again with yearling rib eye of 11.64 and IMF greater than 4 with no creep She is loaded with efficiency traits.

Lot  
4

### LEVELDALE NAN AGAIN 988G

\*X4304251 | COW | 12/23/19 | SH93.75 | POLLED | ROAN | 988G

EIONMOR MARQUIS 86G  
JSF MARQUIS 127X  
JSF MARVEL 12U  
RS DV 034 04 119 07  
LEVELDALE NAN AGAIN 418B  
LEVELDALE NAN AGAIN 211Z

CED	12	YG	-0.38
BW	1.3	CW	9
VW	62	REA	0.55
YW	91	MB	-0.07
MK	26	FAT	-0.08
TM	57	\$CEZ	37.13
CEM	6	\$BMI	147.02
ST	15	\$F	57.72

Birth Wt: 87 | 205 Day Wt: 565 | 365 Day Wt: 778

**Due to calve 1/18/22 to Taylor Made, examined safe. PE Leveldale Lonny.** This bred heifer does it all!! Yearling rib eye of 12.5 and IMF of 5.472 with no creep feed. She brings a great look with easy fleshing on minimal nutrition. The kind to build a herd around. Easy doing that also has plenty of punch and look to go with it.



LOT 6



LOT 5

Lot  
5

### LEVELDALE CASSANDRA 012H

X4304266 | COW | 1/8/20 | SH100 | POLLED | RED | 012H

MURIDALE JAXSON 4A  
LEVELDALE RELOAD 660D ET  
LEVELDALE ROSEWOOD 809U  
DRC 101VM  
LEVELDALE CASSANDRA 019X  
KL CASSANDRIA 125TH

CED	14	YG	-0.36
BW	-0.2	CW	8
WW	55	REA	0.46
YW	87	MB	0.08
MK	34	FAT	-0.08
TM	61	\$CEZ	42.65
CEM	9	\$BMI	149.76
ST	21	\$F	56.83

Birth Wt: 78 | 205 Day Wt: 552 | 365 Day Wt: 812

**Due to calve 2/5/22 to Master Prince, examined safe. PE Leveldale Lonny.**  
Another great Cassandra. A maternal sister to Leveldale Cowboy Up - top herd sire for Gilman's. She brings everything - hitting all targets. There are several outstanding lots that are hard to let go of in this sale, but this clearly one of them.

Lot  
6

### LEVELDALE CASSANDRIA 981G

\*X4299663 | COW | 9/14/19 | SH98.44 | POLLED | RWM | 981G

STUDER'S TAYLOR MADE 7Y  
LEVELDALE BOARDWALK 530C  
LEVELDALE BLOSSOM 230Z  
RS DV 034 04 119 07  
LEVELDALE CASSANDRIA 425B  
LEVELDALE CASSANDRIA 260Z

CED	13	YG	-0.36
BW	1.1	CW	-3
WW	55	REA	0.36
YW	79	MB	0.06
MK	19	FAT	-0.08
TM	46	\$CEZ	41.26
CEM	5	\$BMI	133.15
ST	15	\$F	55.57

Birth Wt: 83 | 205 Day Wt: 475

**Due to calve 1/19/22 to Prince of Jazz, examined safe. PE Leveldale Lonny.**  
Another beautiful Cassandra by Boardwalk and like all Leveldale cattle she received no creep feed yet has a large rib eye with high IMF.





LOT 7



LOT 7A

Lot  
7

### LEVELDALE ROSEWOOD 824F

\*X4273352 | COW | 1/29/18 | SH100 | POLLED | ROAN | 824F

SASKVALLEY RAMROD 155R  
STUDER'S TAYLOR MADE 7Y  
DSF COUNTRY DANCER 42U  
MAPLETON COLONEL GUS 71U  
LEVELDALE ROSEWOOD 618D  
LEVELDALE ROSEWOOD 502R

CED	9	YG	-0.35
BW	3	CW	7
VW	55	REA	0.41
YW	89	MB	-0.13
MK	24	FAT	-0.09
TM	52	\$CEZ	27.55
CEM	5	\$BMI	120.62
ST	13	\$F	53.8

Birth Wt: 84 | 205 Day Wt: 499 | 365 Day Wt: 726

**Due to calve 2/6/22 to Byland Rolex, examined safe. PE Reload.**  
Another very good Rosewood with an outstanding heifer in the sale.  
The look and the performance and the genetics to build a herd, raise champions, and also have super carcass traits

Lot  
7A

### LEVELDALE ROSEWOOD 139J

\*X4325696 | OPEN HEIFER | 2/11/21 | SH100 | POLLED | ROAN | 139J

BAR N RIPPER 99A  
BAR N DELIVERANCE 802F  
BAR N A15 FLORENCE 503C  
STUDER'S TAYLOR MADE 7Y  
LEVELDALE ROSEWOOD 824F  
LEVELDALE ROSEWOOD 618D

CED	11	YG	-0.32
BW	0.3	CW	4
VW	48	REA	0.26
YW	73	MB	-0.15
MK	28	FAT	-0.09
TM	52	\$CEZ	37.85
CEM	7	\$BMI	126.8
ST	18	\$F	49.74

Birth Wt: 78 | 205 Day Wt: 573

This one has been a standout since day one. Huge middled and just the right kind of muscle shape to make her attractive. This one should be highly competitive and then go on to be a big time donor.



Lot  
8

## LEVELDALE RED NAN 803E

X4273330 | COW | 12/19/17 | SH100 | POLLED | RED | 803E

SASKVALLEY RAMROD 155R  
STUDER'S TAYLOR MADE 7Y  
DSF COUNTRY DANCER 42U  
MURIDALE JAXSON 4A

### LEVELDALE RED NAN 632D

LEVELDALE RED NAN 196Y

CED	10	YG	-0.42
BW	2.1	CW	-7
WW	54	REA	0.36
YW	80	MB	-0.1
MK	29	FAT	-0.1
TM	55	\$CEZ	32.44
CEM	5	\$BMI	136.21
ST	13	\$F	53.03

Birth Wt: 82 | 205 Day Wt: 595 | 365 Day Wt: 778

**Due to calve 2/6/22 to JSF Battlefront, examined safe. PE Reload.**  
Very good young cow from a great family and brings valuable efficiency traits.



LOT 8

Lot  
8A

## LEVELDALE RED NAN 138J

\*X4325695 | OPEN HEIFER | 2/9/21 | SH100 | POLLED | ROAN | 138J

JDMC BIG SKY 15X  
JSF CHAIN REACTION 201D  
JSF GOLDEN CHAIN 38A  
STUDER'S TAYLOR MADE 7Y

### LEVELDALE RED NAN 803E

LEVELDALE RED NAN 632D

CED	8	YG	-0.27
BW	2.2	CW	0
WW	52	REA	0.16
YW	73	MB	0.22
MK	26	FAT	-0.08
TM	51	\$CEZ	25.49
CEM	5	\$BMI	130.12
ST	14	\$F	55.24

Birth Wt: 74 | 205 Day Wt: 551

Long bodied, nice necked and deep sided. Very attractive roan heifer that comes from a long line of excellent cows.



LOT 9

Lot  
9

## LEVELDALE ROSEWOOD 741E ET

\*X4255105 | COW | 2/15/17 | SH96.88 | POLLED | ROAN | 741E

MF PACER  
AR SU LU MASTERPLAN 355  
BS ROAN MIST  
PEAK VIEW MOET P1M 6001 ET

### LEVELDALE ROSEWOOD 809U

EF ROSEWOOD 1193

CED	12	YG	-0.4
BW	1.8	CW	10
WW	50	REA	0.41
YW	82	MB	-0.07
MK	27	FAT	-0.11
TM	52	\$CEZ	38.01
CEM	4	\$BMI	125.83
ST	16	\$F	52.63

Birth Wt: 87 | 205 Day Wt: 543 | 365 Day Wt: 793

**Due to calve 3/5/22 to Reload, examined safe. PE Reload.**  
Yes, another outstanding Rosewood out of "one of the greatest" -- Her dam is the dam of many outstanding bulls and cows including Leveldale Ringo!

Lot  
9A

## LEVELDALE ROSEWOOD 143J

\*X4325697 | OPEN HEIFER | 2/16/21 | SH100 | POLLED | ROAN | 143J

SASKVALLEY RAMROD 155R  
STUDER'S TAYLOR MADE 7Y  
DSF COUNTRY DANCER 42U  
AR SU LU MASTERPLAN 355

### LEVELDALE ROSEWOOD 741E ET

LEVELDALE ROSEWOOD 809U

CED	14	YG	-0.36
BW	0.6	CW	1
WW	51	REA	0.36
YW	79	MB	-0.08
MK	25	FAT	-0.08
TM	50	\$CEZ	46.9
CEM	7	\$BMI	133.31
ST	17	\$F	52.57

Birth Wt: 78 | 205 Day Wt: 580

Some of the better cows in our herd are Taylor Made daughters and we feel this heifer will make an impact for the new owner. Good body, stout made and really good at the ground. Love the cow potential in this heifer.

Lot  
10

## LEVELDALE ROSEWOOD 126J

\*X4325692 | OPEN HEIFER | 1/24/21 | SH100 | POLLED | RED | 126J

STUDER'S TAYLOR MADE 7Y  
LEVELDALE BOARDWALK 530C  
LEVELDALE BLOSSOM 230Z  
SASKVALLEY BONANZA 219M  
LEVELDALE ROSEWOOD 706E  
LEVELDALE ROSEWOOD 502R

CED	11	YG	-0.35
BW	2	CW	1
WW	57	REA	0.33
YW	86	MB	-0.01
MK	23	FAT	-0.08
TM	52	\$CEZ	33.58
CEM	4	\$BMI	131.98
ST	18	\$F	56.03

Birth Wt: 90 | 205 Day Wt: 535

This heifer is a perfect example of why we love the Boardwalks so much. Good built, plenty of skeleton and good looking. Don't let this one sneak by on sale day.





lot  
11

## LEVELDALE MATCHLESS 821F

X4273349 | COW | 1/22/18 | SH100 | POLLED | RWM | 821F

STUDER'S TAYLOR MADE 7Y  
LEVELDALE RINGO 337A

LEVELDALE ROSEWOOD 809U

WAUKARU IMF 0080 ET

EF MATCHLESS 453

EF MATCHLESS 1154

CED	8	YG	-0.36
BW	2	CW	5
WW	55	REA	0.38
YW	97	MB	-0.18
MK	29	FAT	-0.09
TM	56	\$CEZ	24.05
CEM	7	\$BMI	118.88
ST	15	\$F	53.43

Birth Wt: 84 | 205 Day Wt: 567 | 365 Day Wt: 760

**Due to calve 1/15/22 to Leveldale North Face, examined safe. PE Reload.**

A super Ringo daughter that hits all the marks including outstanding carcass data. She can raise show stock and super bulls and females.

We have two good daughters also available.



lot  
12

## LEVELDALE MATCHLESS 018H

X4304272 | COW | 1/15/20 | SH100 | POLLED | RED | 018H

SASKVALLEY TRADITION 106T  
JSF WALL STREET 106C ET

KL GOLD ROSE

LEVELDALE RINGO 337A

LEVELDALE MATCHLESS 821F

EF MATCHLESS 453

CED	12	YG	-0.38
BW	1.4	CW	2
WW	51	REA	0.41
YW	87	MB	-0.03
MK	31	FAT	-0.09
TM	57	\$CEZ	39.06
CEM	8	\$BMI	133.8
ST	16	\$F	53.57

Birth Wt: 79 | 205 Day Wt: 518 | 365 Day Wt: 756

**Due to calve 1/20/22 to Taylor Made, examined safe. PE Leveldale Lonny.**

Nice bred heifer that checks all the boxes for efficiency and a rib eye bigger than many breeders herd bulls in a feminine package.



lot  
12A

## LEVELDALE MATCHLESS 103J

X4325690 | OPEN HEIFER | 1/3/21 | SH100 | POLLED | R/W | 103J

MURIDALE BUSTER 14K  
MURIDALE JAXSON 4A

MURIDALE PRAIRIE 47T

LEVELDALE RINGO 337A

LEVELDALE MATCHLESS 821F

EF MATCHLESS 453

CED	10	YG	-0.38
BW	1.1	CW	2
WW	53	REA	0.4
YW	89	MB	-0.05
MK	28	FAT	-0.09
TM	54	\$CEZ	30.31
CEM	8	\$BMI	129.19
ST	17	\$F	54.13

Birth Wt: 74 | 205 Day Wt: 489

Striking red and white heifer here. Impeccable balance while having great rib shape and soundness. More moderate heifer that has great hair and should be easy to feed. Exhibit and use her to build a herd.



lot  
13

## LEVELDALE LADY SUPREME 030H

\*X4304284 | COW | 1/25/20 | SH96.88 | POLLED | ROAN | 030H

SASKVALLEY IMAGINE 65X

LEVELDALE NORTH FACE 562

LEVELDALE NAN AGAIN 110Y

WAUKARU REALIGN 3112

HSF LADY SUPREME 936

EF LADY SUPREME 202

CED	7	YG	-0.33
BW	2.5	CW	14
WW	62	REA	0.39
YW	100	MB	-0.08
MK	26	FAT	-0.09
TM	57	\$CEZ	19.09
CEM	7	\$BMI	128.69
ST	18	\$F	57.59

Birth Wt: 83 | 205 Day Wt: 568 | 365 Day Wt: 838

Due to calve 2/27/22 to JSF Battlefront, examined safe. PE Leveldale Lonny.  
Another good bred heifer hitting efficiency targets and carcass data with great stayability.



lot  
14

## LEVELDALE LADY SUPREME 123J

\*X4325691 | OPEN HEIFER | 1/22/21 | SH100 | POLLED | RED | 123J

STUDER'S TAYLOR MADE 7Y

LEVELDALE BOARDWALK 530C

LEVELDALE BLOSSOM 230Z

WAUKARU REALIGN 3112

HSF LADY SUPREME 936

EF LADY SUPREME 202

CED	10	YG	-0.42
BW	1.6	CW	3
WW	59	REA	0.51
YW	93	MB	-0.1
MK	26	FAT	-0.1
TM	56	\$CEZ	30.21
CEM	5	\$BMI	135.78
ST	15	\$F	56.2

Birth Wt: 82 | 205 Day Wt: 555

This heifer is feminine fronted, long bodied and smooth made female with exceptional flexibility. This one was a little green on picture day but keeps getting better and better every day. Love the potential in this one.



## SERVICE SIRES OF LEVELDALE



Muridale Thermal Energy



Leveldale Reload



Leveldale North Face



JSF Battlefront



BSF Master Prince



Leveldale Lonny 006H





lot  
15

## LEVELDALE MOET 982G

\*X4299664 | COW | 9/15/19 | SH98.44 | POLLED | RED | 982G

STUDER'S TAYLOR MADE 7Y  
LEVELDALE BOARDWALK 530C  
LEVELDALE BLOSSOM 230Z  
PEAK VIEW MOET P1M 6001 ET  
PEAK VIEW MOET P2F 23710  
PEAK VIEW MOET P1F 7003 ET

CED	11	YG	-0.4
BW	1.1	CW	-8
WW	48	REA	0.3
YW	71	MB	-0.18
MK	20	FAT	-0.09
TM	44	\$CEZ	36.48
CEM	3	\$BMI	116.75
ST	16	\$F	49.08

Birth Wt: 81 | 205 Day Wt: 468

**Due to calve 2/28/22 to JSF Battlefront safe, PE Leveldale Lonny.**  
Outstanding Boardwalk bred heifer from a top Peak View Ranch female going back to the best of Dover Ranch genetics ---- a rare find!  
Genetically lined up for calving ease and growth.



lot  
16

## LEVELDALE RED NAN 031H

\*X4304285 | COW | 1/25/20 | SH98.44 | POLLED | RWM | 031H

STUDER'S TAYLOR MADE 7Y  
LEVELDALE BOARDWALK 530C  
LEVELDALE BLOSSOM 230Z  
LEVELDALE RANGER 271Z  
HSF RED NAN 526  
EF RED NAN 239

CED	10	YG	-0.41
BW	2.3	CW	3
WW	55	REA	0.54
YW	86	MB	-0.07
MK	25	FAT	-0.09
TM	53	\$CEZ	31.57
CEM	4	\$BMI	129.56
ST	15	\$F	54.46

Birth Wt: 87 | 205 Day Wt: 556 | 365 Day Wt: 799

**Due to calve 3/24/22 to Leveldale Lonny, examined safe. PE Leveldale Lonny.**  
Beautiful Boardwalk daughter with all the efficiency traits in one package.  
Long bodied female that is long in her skeleton yet has plenty of rib shape and dimension. Stands on plenty of foot and bone to make sure longevity is in her future



lot  
17

## LEVELDALE FLOSS 050H

\*X4304302 | COW | 2/11/20 | SH99.2 | POLLED | RED | 050H

LEVELDALE BOARDWALK 530C  
LEVELDALE SHAWSHANK 846F  
LEVELDALE STORM LASS 281Z  
LEVELDALE RANGER 271Z  
HSF FLOSS 596  
EF ROSEWOOD 1074

CED	12	YG	-0.42
BW	2	CW	3
WW	54	REA	0.51
YW	83	MB	-0.09
MK	31	FAT	-0.09
TM	58	\$CEZ	37.4
CEM	5	\$BMI	138.94
ST	16	\$F	53.71

Birth Wt: 81 | 205 Day Wt: 574 | 365 Day Wt: 826

**Due to calve 2/5/22 to Master Prince, examined safe. PE Leveldale Lonny.**  
Great efficiency traits with a great look and with a rib eye bigger than many breeders herd bulls. One of the stouter made Shawshank heifers we kept back.  
Really good in her lines and very sound structured.



Lot  
18

## LEVELDALE RUTH 065H

\*X4316048 | COW | 3/1/20 | SH100 | POLLED | RED | 065H

MURIDALE JAXSON 4A  
**LEVELDALE RELOAD 660D ET**  
LEVELDALE ROSEWOOD 809U  
STUDER'S TAYLOR MADE 7Y  
**LEVELDALE RUTH 438B**  
LEVELDALE RUTH 906W ET

CED	12	YG	-0.43
BW	1.2	CW	-4
WW	46	REA	0.48
YW	75	MB	-0.07
MK	30	FAT	-0.09
TM	52	\$CEZ	38.49
CEM	8	\$BMI	131.50
ST	18	\$F	50.30

Birth Wt: 83 | 205 Day Wt: 440 | 365 Day Wt: 692

**Due to calve 3/5/22 to Leveldale Lonny, examined safe. PE Lonnie.**

A Reload daughter that is stout from end to end with a great running gear. The Ruth cow family has many successful stories and famous offspring. This is another beautiful and efficient one. She hits all the targets.



Lot  
19

## LEVELDALE ROSEWOOD 064H

X4316047 | COW | 2/29/20 | SH100 | POLLED | RED | 064H

MURIDALE JAXSON 4A  
**LEVELDALE RELOAD 660D ET**  
LEVELDALE ROSEWOOD 809U  
LEVELDALE PROSPERITY 747T  
**EF ROSEWOOD 883**  
EF ROSEWOOD 1437

CED	6	YG	-0.37
BW	3.3	CW	9
WW	60	REA	0.47
YW	99	MB	0.04
MK	34	FAT	-0.09
TM	64	\$CEZ	16.5
CEM	6	\$BMI	134.11
ST	17	\$F	58.26

Birth Wt: 92 | 205 Day Wt: 586 | 365 Day Wt: 842

**Due to calve 1/19/22 to Taylor Made, examined safe. PE Leveldale Lonny.**

Another Rosewood that hits many targets Bred to Taylor Made should make another good one.



Lot  
20

## LEVELDALE ROCKSIE 024H

X4304278 | COW | 1/22/20 | SH100 | POLLED | RED | 024H

MURIDALE JAXSON 4A  
**LEVELDALE RELOAD 660D ET**  
LEVELDALE ROSEWOOD 809U  
RS DV 034 322 09  
**EF ROCKSIE 353**  
EF ROCKSIE 550

CED	7	YG	-0.31
BW	2.8	CW	10
WW	54	REA	0.35
YW	86	MB	0.12
MK	33	FAT	-0.08
TM	60	\$CEZ	22.48
CEM	6	\$BMI	130.39
ST	18	\$F	55.84

Birth Wt: 86 | 205 Day Wt: 518 | 365 Day Wt: 783

**Due to calve 2/28/22 to Taylor Made, examined safe. PE Leveldale Lonny.**

Excellent growth, stayability and marbling All in an attractive package. We feel the mating to Taylor made on this Reload daughter could be really good. Sure fire calving ease then should have plenty of growth and performance at weaning time.



Lot  
21

## LEVELDALE RUBY 019H

\*X4304273 | COW | 1/19/20 | SH98.44 | POLLED | RWM | 019H

MURIDALE JAXSON 4A  
**LEVELDALE RELOAD 660D ET**  
LEVELDALE ROSEWOOD 809U  
NPS ANCHOR 074X ET  
**HFS RUBY 318**  
MSD RUBY S 0732

CED	6	YG	-0.33
BW	2.6	CW	6
WW	44	REA	0.34
YW	71	MB	0.26
MK	30	FAT	-0.09
TM	52	\$CEZ	22.51
CEM	4	\$BMI	117.77
ST	18	\$F	52.71

Birth Wt: 84 | 205 Day Wt: 517 | 365 Day Wt: 734

**Due to calve 1/18/22 to Taylor Made, examined safe. PE Leveldale Lonny.**

Extremely stout made and bold in her rib shape. The Reloads appear like there gonna make really good cows and we feel like 019 will be a perfect example of that.. Great maternal traits and carcass.







Lot  
22

## LEVELDALE RED NAN 002H

\*X4304255 | COW | 1/1/20 | SH100 | POLLED | ROAN | 002H

SASKVALLEY ULTRA 12J  
SASKVALLEY BONANZA 219M  
SASKVALLEY BRENDA 218K  
RS DV 034 322 09  
EF RED NAN 823  
EF RED NAN 920

CED	8	YG	-0.2
BW	2.4	CW	11
WW	60	REA	0.13
YW	89	MB	0.18
MK	34	FAT	-0.07
TM	63	\$CEZ	25.2
CEM	9	\$BMI	143.54
ST	21	\$F	59

Birth Wt: 85 | 205 Day Wt: 606 | 365 Day Wt: 853

**Due to calve 1/6/22 to Taylor Made, examined safe. PE Leveldale Lonny.**  
The Bonanza cattle that we have had really perform well yet have the look that is acceptable for today. Bred safe to Taylor Made makes this a lot to look up on sale day. Great IMF, Milk, & Stayability.



Lot  
23

## LEVELDALE NONPAREIL 990G

\*X4304253 | COW | 12/27/19 | SH100 | POLLED | ROAN | 990G

AR SU LU MASTERPLAN 355  
LEVELDALE RIGHTEOUS 084 ET  
EF ROSEWOOD 1193  
BSG STAYABILITY 1413  
LEVELDALE NONPAREIL 871F  
LEVELDALE NONPAREIL 601D

CED	15	YG	-0.27
BW	0.3	CW	8
WW	48	REA	0.19
YW	76	MB	0.14
MK	22	FAT	-0.08
TM	46	\$CEZ	49.21
CEM	8	\$BMI	128.09
ST	16	\$F	54.03

Birth Wt: 80 | 205 Day Wt: 537 | 365 Day Wt: 741

**Due to calve 2/14/22 to Taylor Made, examined safe. PE Leveldale Lonny.**  
This female brings it ---- BW 80 combined with Leveldale Righteous (one of Jungels all time favorites) for the Rosewood cow family. She does it all great structure, calving ease, MCE, Growth and Stayability.



Lot  
24

## LEVELDALE MAY 060H

\*X4316043 | COW | 2/23/20 | SH98.05 | POLLED | RWM | 060H

STUDER'S TAYLOR MADE 7Y  
LEVELDALE BOARDWALK 530C  
LEVELDALE BLOSSOM 230Z  
JSF MARQUIS 127X  
DSF MAY 12C  
DSF MAY 40Y

CED	10	YG	-0.51
BW	2.6	CW	-5
WW	59	REA	0.71
YW	90	MB	-0.17
MK	22	FAT	-0.09
TM	52	\$CEZ	31.15
CEM	2	\$BMI	133.29
ST	13	\$F	55.13

Birth Wt: 86 | 205 Day Wt: 476 | 365 Day Wt: 741

**Due to calve 2/27/22 to JSF Battlefront, examined safe. PE Leveldale Lonny.**  
Another super attractive Boardwalk daughter that brings all the traits you want including outstanding carcass data. Really good built heifer that comes from one of the better looking cows in the herd. Big boned, stout hipped yet plenty of flexibility to get around.



Lot  
25

## LEVELDALE CASSANDRA 989G

X4304252 | COW | 12/24/19 | SH100 | POLLED | RED | 989G

DRC 29M6	CED 17	YG -0.23
<b>DRC 101VM</b>	BW -1.2	CW 1
DRC 0114CH	WW 55	REA 0.09
MURIDALE JAXSON 4A	YW 82	MB -0.09
<b>LEVELDALE CASSANDRA 810F</b>	MK 27	FAT -0.07
LEVELDALE CASSANDRA 455B	TM 55	\$CEZ 54.63
	CEM 10	\$BMI 143.16
	ST 18	\$F 53.95

Birth Wt: 76 | 205 Day Wt: 563 | 365 Day Wt: 733

**Due to calve 2/28/22 to Master Prince, examined safe. PE Leveldale Lonny.**  
Another super Cassandra out of a daughter of 455B, Lot 1, a maternal sister to Leveldale Chief. Another Cassandra that can raise bull, and heifers that can do it all with efficiency CED MCE Growth and Stayability.



Lot  
26

## LEVELDALE CASSANDRA 041

X4326229 | COW | 1/30/20 | SH100 | POLLED | RED | 041H

SASKVALLEY RAMROD 155R	CED 15	YG -0.33
<b>STUDER'S TAYLOR MADE 7Y</b>	BW -0.6	CW -8
DSF COUNTRY DANCER 42U	WW 48	REA 0.31
ROYALLA QUANTICO J011	YW 74	MB 0.09
<b>LEVELDALE CASSANDRA 833F</b>	MK 22	FAT -0.07
LEVELDALE CASSANDRA 505C	TM 46	\$CEZ 49.00
	CEM 8	\$BMI 132.90
	ST 15	\$F 52.94

Birth Wt: 79 | 205 Day Wt: 609

**Due to calve 2/14/22 to Leveldale Lonny, examined safe. PE Leveldale Lonny.**  
Longevity is bred into this Taylor Made daughter. Her grandmother is still producing and looks great in the herd. 041 is an ultra feminine female with a beautiful front one third. This female will produce for years and look good doing it. Fault free.



Lot  
27

## LEVELDALE ROSEWOOD 016H

\*XAR4304270 | COW | 1/13/20 | AR87.5 | POLLED | RWM | 016H

MURIDALE JAXSON 4A	CED 7	YG -0.35
<b>LEVELDALE RELOAD 660D ET</b>	BW 2.5	CW 9
LEVELDALE ROSEWOOD 809U	WW 53	REA 0.49
LEVELDALE RAMADA 411B	YW 86	MB 0.17
<b>LEVELDALE ROSEWOOD 780E</b>	MK 28	FAT -0.08
LEVELDALE ROSEWOOD 707T	TM 54	\$CEZ 22.26
	CEM 1	\$BMI 119.67
	ST 18	\$F 56.07

Birth Wt: 93 | 205 Day Wt: 559

**Due to calve 1/20/22 to Taylor Made, examined safe. PE Leveldale Lonny.**  
Another great Reload daughter that we're sure excited about. Great from the ground up yet still has the look and style to go with it. One of my nephews favorite bred in the sale. 016 will work in the real world.







LOT 28



LOT 29

lot  
28

### LEVELDALE VICTORIA 646D ET

\*X4248889 | COW | 2/23/16 | SH100 | POLLED | RWM | 646D

SASKVALLEY RAMROD 155R  
STUDER'S TAYLOR MADE 7Y  
DSF COUNTRY DANCER 42U  
PEAK VIEW MOET P1M 6001 ET  
LEVELDALE VICTORIA 812U  
LEVELDALE VICTORIA 453P

CED	7	YG	-0.29
BW	2.5	CW	-11
WW	54	REA	0.04
YW	82	MB	-0.15
MK	19	FAT	-0.08
TM	46	SCEZ	23.38
CEM	-1	\$BMI	104.8
ST	19	\$F	52.07

Birth Wt: 84

**Due to calve 2/5/22 to JSF Battlefront, examined safe. PE Reload.**  
Taylor Made daughter out of one of our favorites cows that has done well for Steve and Julie French. We are retaining a daughter as well. If you want one for the front pasture then here she is. This cows proportions are perfect. Elegant fronted and perfect in her for-ribbed. Big barreled and stout hiped. I feel this one can raise show heifers along with big stout herd bulls. Her calf sired by Battlefront could be big time.

lot  
29

### LEVELDALE ROYAL ROSE 785E

\*X4255149 | COW | 4/14/17 | SH97.66 | POLLED | ROAN | 785E

SBR HI-DEFINITION 16 X  
3BC IRON SIGHTS 0924  
3BC KERRIN 0924  
JSF MAESTRO 35U  
JSF ROYAL ROSE 200Y  
KL ROYAL ROSE 7F30

CED	16	YG	-0.43
BW	-1.9	CW	-16
WW	28	REA	0.41
YW	45	MB	0.06
MK	23	FAT	-0.08
TM	37	SCEZ	58.1
CEM	10	\$BMI	121.16
ST	16	\$F	43.09

Birth Wt: 69 | 205 Day Wt: 541 | 365 Day Wt: 712

**Due to calve 3/4/22 to Leveldale Shawshank, examined safe. PE Shaw.**  
One of my personal favorites. Huge bodied, good looking and great at the ground. A Lot of punch and power in this moderate made Iron Sights daughter. A cow you can mate a lot of different ways but when there built this good it takes the guessing game out. Don't miss this one.



Lot  
30

## LEVELDALE RUTH 622D

\*X4236512 | COW | 1/11/16 | SH100 | POLLED | RED | 622D

RS DV729 01 034 04  
RS DV 034 04 119 07  
RS RED STAR 10TH  
STUDER'S TAYLOR MADE 7Y  
LEVELDALE RUTH 438B  
LEVELDALE RUTH 906W ET

CED	15	YG	-0.31
BW	-0.4	CW	2
WW	56	REA	0.35
YW	83	MB	-0.11
MK	24	FAT	-0.07
TM	52	SCEZ	49.11
CEM	10	\$BMI	144.55
ST	17	\$F	54.51

Birth Wt: 78 | 205 Day Wt: 621

**Due to calve 3/4/22 to Reload, examined safe. PE Reload.**

Another good Ruth that hits all the targets. Calving ease, BW, Growth, Milk, and REA. She can raise good bulls and heifers.



Lot  
31

## LEVELDALE GOLD ROSE 828F ET

\*X4273356 | COW | 2/2/18 | SH98.4 | POLLED | RED | 828F

STUDER'S TAYLOR MADE 7Y  
LEVELDALE BOARDWALK 530C  
LEVELDALE BLOSSOM 230Z  
WAUKARU GOLD ELEMENT 156  
KL GOLD ROSE  
KL DOUBLE ROSE

CED	14	YG	-0.47
BW	-2.6	CW	-18
WW	47	REA	0.41
YW	66	MB	-0.3
MK	30	FAT	-0.09
TM	53	SCEZ	49.98
CEM	3	\$BMI	136.97
ST	18	\$F	47.34

Birth Wt: 90 | 205 Day Wt: 555 | 365 Day Wt: 735

**Due to calve 2/21/22 to Reload, examined safe. PE Reload.**

A Boardwalk daughter that's not even in the prime of her life yet. Love this one from every angle. Some cows you just know will generate year after year and for me this is one of them. Bred safe to Reload we feel like her next calf could be special.



Lot  
32

## LEVELDALE MARIGOLD MARIE 901G

\*X4289598 | COW | 1/1/19 | SH96.88 | POLLED | RED | 901G

STUDER'S TAYLOR MADE 7Y  
LEVELDALE BOARDWALK 530C  
LEVELDALE BLOSSOM 230Z  
JSF MAESTRO 35U  
JSF MARIGOLD MARIA 199Y  
KL MARIGOLD MARIA 8F29

CED	13	YG	-0.48
BW	0.5	CW	-3
WW	58	REA	0.69
YW	85	MB	-0.08
MK	29	FAT	-0.09
TM	58	SCEZ	41.46
CEM	6	\$BMI	152.44
ST	16	\$F	55.66

Birth Wt: 84 | 205 Day Wt: 677 | 365 Day Wt: 813

**Due to calve 3/23/22 to Leveldale Maddox, examined safe. PE Maddox.**

Great opportunity to own a young Boardwalk cow here. Maintenance free female that has the look and power to raise marketable calves for many years. Goes back to a really good Jungels cow that produces every year.







Lot  
33

## LEVELDALE RUTH 812F

\*X4273339 | COW | 1/8/18 | SH1.00 | POLLED | RED | 812F

DRC 29M6	CED 17	YG -0.34
DRC 101VM	BW 0.7	CW 11
DRC 0114CH	WW 57	REA 0.28
STUDER'S TAYLOR MADE 7Y	YW 94	MB -0.24
LEVELALE RUTH 609D ET	MK 20	FAT -0.11
LEVELDALE RUTH 906W ET	TM 49	\$CEZ 52.88
	CEM 8	\$BMI 131.06
	ST 19	\$F 54.36

Birth Wt: 63 | 205 Day Wt: 374 | 365 Day Wt: 637

**Due to calve 1/15/22 to Boardwalk, examined safe. PE Reload.**

Another young cow that is hard to part with. She'll raise the keeping kind year after year. Functional females that can flat out raise one yet maintain her condition when she's nursing. Sells safe to Boardwalk and we feel like that mating could really hit.



Lot  
34

## LEVELDALE MAY 721E

\*X4255086 | COW | 1/31/17 | SH99.61 | POLLED | RED | 721E

TPS CORONET CATALYST 20TH	CED 10	YG -0.41
DMH CATALYST 20-14 ET	BW 2.5	CW -4
ROSABELL 436TH	WW 53	REA 0.57
JSF MARQUIS 127X	YW 80	MB -0.06
DSF MAY 12C	MK 23	FAT -0.07
DSF MAY 40Y	TM 50	\$CEZ 32.13
	CEM 1	\$BMI 124.4
	ST 14	\$F 53.16

Birth Wt: 91 | 205 Day Wt: 627 | 365 Day Wt: 850

**Due to calve 4/4/22 to Leveldale Shawshank, examined safe. PE Shaw.**

The mother of one of our favorite bulls from 2000, Leveldale Maddox. He had a yearling adjusted down to 19.3 Rib Eye! Great structure.



Lot  
35

## LEVELDALE RHINESTONE 653

\*X4237906 | COW | 2/28/16 | SH98.83 | POLLED | RED | 653D

SASKVALLEY TASK FORCE 105T	CED 14	YG -0.34
BSG STAYABILITY 1413	BW -0.7	CW 9
BSG ROSEWOOD SYLVIA 1244	WW 48	REA 0.47
LEVELDALE PLAYER 249Z	YW 71	MB 0.14
LEVELDALE RHINESTONE 458B	MK 32	FAT -0.08
JSF RHINESTONE 159Y	TM 56	\$CEZ 45.95
	CEM 9	\$BMI 146.24
	ST 19	\$F 53.53

Birth Wt: 74 | 205 Day Wt: 523

**Due to calve 2/2/22 to Reload, examined safe. PE Reload.**

Big bodied stout made female that's coming in the prime of her life. Outcross pedigree that gives you a lot of different breeding options. Low maintenance cows are something we strive for here and 653 differently fits the bill. She has a good daughter in the herd and hits most target by a unique sire from BSG Stayability.



Lot  
36

## LEVELDALE LASSIE 811F

\*X4273338 | COW | 1/7/18 | SH100 | POLLED | RED | 811F

BELMORE JACKAROO Z109  
CROOKED POST STOCKMAN 4Z  
CROOKED POST RED ROSE 4U  
STUDER'S TAYLOR MADE 7Y

LEVELDALE LASSIE 446B ET  
LEVELDALE LASSIE 7107T

CED	13	YG	-0.31
BW	1.2	CW	6
WW	66	REA	0.44
YW	93	MB	-0.06
MK	35	FAT	-0.06
TM	68	SCEZ	39.74
CEM	8	\$BMI	163.41
ST	19	\$F	59.17

Birth Wt: 76 | 205 Day Wt: 591 | 365 Day Wt: 793

**Due to calve 1/15/22 to Thermal Energy, examined safe. PE Reload.**  
The Lassie always perform well. This Lassie has the added CPS genetics and has left us a good daughter in the Leveldale herd. Her grandmother affectionately known as "the white cow" is still producing in our herd and turns 15 in a few months.



Lot  
37

## LEVELDALE ROSEWOOD 855F

\*X4273383 | COW | 2/27/18 | SH98.44 | POLLED | ROAN | 855F

BELMORE JACKAROO Z109  
CROOKED POST STOCKMAN 4Z  
CROOKED POST RED ROSE 4U  
JSF MAESTRO 35U  
JSF ROSEWOOD 168Y  
KL ROSEWOOD 327TH

CED	10	YG	-0.41
BW	2.8	CW	8
WW	57	REA	0.62
YW	89	MB	-0.01
MK	32	FAT	-0.08
TM	60	SCEZ	30.93
CEM	6	\$BMI	142.64
ST	15	\$F	56.16

Birth Wt: 89 | 205 Day Wt: 564 | 365 Day Wt: 713

**Due to calve 1/15/22 to Thermal Energy, examined safe. PE Reload.**  
Another very good CPS daughter. We are retaining her daughter and think she can add many things to many programs.



Lot  
38

## LEVELDALE ROSEWOOD 905G

\*X4289602 | COW | 1/3/19 | SH96.88 | POLLED | RWM | 905G

JDMC BIG SKY 15X  
JSF CHAIN REACTION 201D  
JSF GOLDEN CHAIN 38A  
LEVELDALE JAVA 3310N  
LEVELDALE ROSEWOOD 606S  
EF ROSEWOOD 1193

CED	6	YG	-0.32
BW	2.4	CW	4
WW	43	REA	0.24
YW	63	MB	0.34
MK	27	FAT	-0.09
TM	48	SCEZ	23.52
CEM	5	\$BMI	121
ST	14	\$F	52.63

Birth Wt: 91 | 205 Day Wt: 602 | 365 Day Wt: 665

**Due to calve 1/28/22 to JSF Bond, examined safe. PE Reload.**  
She brings it all.....This fine Rosewood's mother will turn 16 y/o in a few months and has been a great producer of herd bulls and females for 13 years. This is one of the greatest cow families, always low maintenance and raises great calves annually. Byland Rolex is a grandson of hers.





On behalf of Cagwin Farms, I wish to thank Levedale Farms for the opportunity to join with the Levedale Family in celebration of 170 years in 2022. What a chance to evaluate cattle from four iconic programs, as all firms have been recognized by the American Shorthorn Assoc. as Hall of Fame programs.

I am sure that no matter what you need to improve your program from show cattle, performance cattle or commercially accepted cattle you will find that these cattle will excel in all parts of the industry.

- All breeding cattle are Vaccinated with 5-way LeptoVibrio in the spring every year.
- All cattle are wormed with Ivomec.
- All heifer calves are vaccinated for Brucellosis, 7-way Blackleg, Red Nose, Para Influenza & Pink Eye.
- All are CHV.
- All 2021 purebred heifers are Land of Lincoln Eligible.

If you have any questions or would like to view our sale offering, just give us a call.

Don 217-341-7552

Kerry 217-370-6033

Dalton 217-416-9536

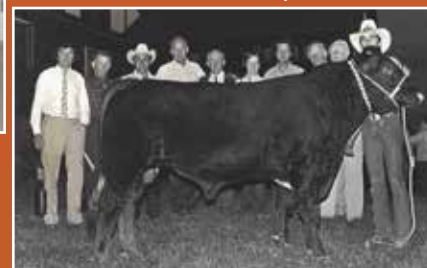
Looking forward to seeing you on Oct. 30th.

Cagwin Farms

*For the buyers convenience, the show females have been entered in the North American Open Show in Louisville.*



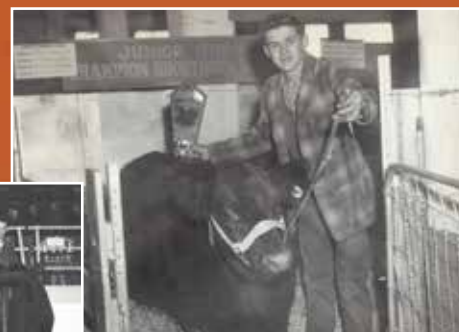
Pete Swaffer ASA Fieldmen



The Irish 20 Sale in the Early 80s (Mick)



Tank



1958 Denver Champion

ASA Show Honoree - 2014 NAILE



1959 American Royal



CAGWINCATTLE.COM







lot  
39

## CYT SILVER GEM 4135

\*X4221822 | COW | 1/11/14 | SH93.75 | POLLED | ROAN | CYT 4135

TEGM RED ADVANTAGE 100T  
SULL RED IN FOCUS ET  
SBR DORA 342  
SASKVALLEY PRIMO 40P  
ALTA CEDAR SILVER GEM 82U  
ALTA CEDAR SILVER GEM 3H

CED	7	YG	-0.38
BW	3	CW	-1
WW	45	REA	0.26
YW	70	MB	0.01
MK	20	FAT	-0.1
TM	42	\$CEZ	24.48
CEM	2	\$BMI	106.84
ST	12	\$F	50.01

Birth Wt: 91

**Due to calve 1/24/22, to JSF Time Square sexed heifer semen, examined safe.**

Silver Gem has been a main stay for us at Cagwin Farms. She was purchased as a 1st calf heifer from Cyclone Trace, she then produced a heifer calf by Diversity that was a feature in the 2016 Leveldale sale. Her next calf was the Evolution daughter, pictured. That was the junior show calf champion at the 2017 IL state fair, shown by Dalton. Since then she has went on to produce two more heifers and steer that have been more then complete in the show ring. This 7 year old female has come to you in the prime of her life. Bred to a great bull and packed with performance plus a pedigree that speaks for its self. CHV

Service Sire - JSF Times Square





Lot 40		CCS LADY CRYSTAL 7F	
*X4270773		COW   2/7/18   SH96.49   POLLED   ROAN   CCS DC27F	
SULL RED REWARD 9321		CED 10	YG -0.44
<b>CF S/F ULTIMATE REWARD ET</b>		BW 1	CW 0
CF HHF MARGIE 2106 HC X ET		VW 52	REA 0.49
JSF MARQUIS 127X		YW 82	MB -0.13
<b>SULL LADY CRYSTAL TOO 6433D ET</b>		MK 21	FAT -0.1
SHERWOOD LADY CRYSTAL ET		TM 47	\$CEZ 31.27
		CEM 3	\$BMI 119.08
		ST 11	\$F 52.21

Birth Wt: 61

*Due to calve 2/4/22 to Gale Force, examined safe.*

This 3 year old daughter of Ultimate Reward is a truly attractive female with tons of potential and eye appeal. Having raised two heifers that have been put in the replacement herd, her mother is a definite fixture here at Cagwin Farms going back JSF Marquis 127C, Sherwood Lady Crystal and Margie's Dream Lady 05 ET. CHV



Lot 41		SULL CRYSTAL 7236E ET	
*X4273741		COW   3/3/17   SH100   POLLED   ROAN   SULL 7236E	
CF TRUMP X		CED 3	YG -0.39
<b>SULL RIGHT DIRECTION ET</b>		BW 4.8	CW 2
NPS DESERT ROSE 004		VW 53	REA 0.38
LITTLE CEDAR AVIATOR 503X		YW 88	MB -0.02
<b>SULL CRYSTAL'S LUCY ET</b>		MK 27	FAT -0.1
SULL LADY CRYSTAL-434P-1 ET		TM 53	\$CEZ 7.85
		CEM -2	\$BMI 104.68
		ST 8	\$F 53.63

Birth Wt: 87

*Due to calve 1/22/22 to JFS Time Square, examined safe.*

Here is a Right Direction daughter at the peak of production. This four year old descendant from the Lady Crystal and Dream Lady cow family makes her a welcome addition to any serious Shorthorn breeders program. CHV



Lot 42		CCS GOLDEN CUMBERLAND 915G	
*X4298418		COW   9/15/19   SH100   POLLED   RED   CCS DC195G	
CS STARMARKER CS381A		CED 7	YG -0.35
<b>JA SP GALE FORCE SM 6J54</b>		BW 2	CW -12
JA RED MEG 3J13 ET		VW 34	REA 0.15
LPA GOLD RUSH		YW 56	MB -0.04
<b>WHR GOLDEN CUMBERLAND 401</b>		MK 25	FAT -0.09
WHR PURE CUMBERLAND 8929 ET		TM 42	\$CEZ 28.2
		CEM 4	\$BMI 98.36
		ST 9	\$F 43.86

Birth Wt: 86 | 205 Day Wt: 1002 | 365 Day Wt: 1168

*Due to calve 1/14/22 to Millbrook Fireball 23F, examined safe.*

This 1st calf heifer by Gale Force comes to you a little older being born in the fall of 2019, we decided to breed her for a spring born calf. Being bred to Fireball and out of the Cumberland cow family the potential is endless here. CHV





LOT 43A



LOT 43



CCS Red Reign

Lot  
43

### CCS GOLDENDROP 318E

\*X4251824 | COW | 3/18/17 | SH98.44 | POLLED | RED | CCS DC318E

HILL HAVEN BOLD 4X

CCS BOLD 26C ET

SULL DOLLY 8144 ET

JSF DEMAND 43Z

HIGHLAND GOLDENDROP 440

HIGHLAND GOLDENDROP 149

Birth Wt: 82 | 205 Day Wt: 601 | 365 Day Wt: 1015

Due to calve 1/18/22 to JSF Time Square, examined safe.

This is a tough decision to let both this cow and her heifer calf go. But we are committed to bringing our best for you, the customer to have a chance to purchase. This 4 year old cow has truly out done herself with the heifer she has raised this year. Being bred to Time Square should make her future even brighter. CHV

CED	6	YG	-0.37
BW	3	CW	-3
WW	43	REA	0.33
YW	66	MB	0.02
MK	21	FAT	-0.09
TM	43	\$CEZ	20.74
CEM	0	\$BMI	100.95
ST	10	\$F	48.78

Lot  
43A

### CCS GOLDEN DROP 218J

\*X4322605 | OPEN HEIFER | 2/18/21 | SH100 | POLLED | ROAN | CCS DC218J

CSF EVOLUTION HC

CCS ONWARD 121E

CCS STYLISH GIRL 110Z

CCS BOLD 26C ET

CCS GOLDENDROP 318E

HIGHLAND GOLDENDROP 440

Birth Wt: 65

Definitely a farm favorite, note length of hip, internal capacity and front end in this heifer. She hails from the Goldendrop cow family that we purchased from Highland farms in Pittsfield IL. Her mother would be a half sister to CCS Red Reign, the reigning IL State Fair Champion Shorthorn bull for 2021. Land Of Lincoln Eligible. CHV

CED	7	YG	-0.44
BW	1.9	CW	-1
WW	46	REA	0.43
YW	75	MB	0.01
MK	20	FAT	-0.1
TM	43	\$CEZ	24.03
CEM	3	\$BMI	109.08
ST	10	\$F	50.93





LOT 44



LOT 44A

Lot  
44

### CCS KATRINIA 46E

\*X4251819 | COW | 4/6/17 | SH100 | POLLED | RED | CCS DC46E

HILL HAVEN BOLD 4X

CCS BOLD 228C

CCS FARAH 101W

MAJESTIC VISA'S TUCKER 4T

CCS KATRINA 19Z

CCS KATRINA 411R

Birth Wt: 69 | 205 Day Wt: 728 | 365 Day Wt: 1092

Due to calve 1/28/22 to Millbrook Fireball 23F, examined safe.

This Katrina cow family has been a true may stay cow family at Cagwin Farms. Her sire CCS Bold 228C has done an excellent job producing top notch females for us and Warner shorthorns in Wyoming. Being bred to Fireball, this is a opportunity to purchase some elite genetics that will probably not be readable available. CHV

CED	6	YG	-0.33
BW	4.2	CW	-2
VW	48	REA	0.25
YW	67	MB	0.03
MK	25	FAT	-0.08
TM	49	\$CEZ	20.7
CEM	2	\$BMI	118.58
ST	15	\$F	51.03

Lot  
44A

### CCS KATRINIA 308J

\*X4322616 | OPEN HEIFER | 3/8/21 | SH100 | POLLED | ROAN | CCS DC308J

HILL HAVEN FIRE STORM 28C

MILLBROOK FIREBALL 23F

MILLBROOK DAISY'S PRIDE 18X

CCS BOLD 228C

CCS KATRINIA 46E

CCS KATRINA 19Z

Birth Wt: 74

This red neck roan heifer by Fireball has all the right parts to make a great show female. And the performance to perform in your pasture. Selling along side her mother you can see where she gets the extra performance growth from. Land Of Lincoln Eligible. CHV

CED	7	YG	-0.29
BW	3.3	CW	-7
VW	43	REA	0.07
YW	61	MB	-0.11
MK	25	FAT	-0.08
TM	46	\$CEZ	25.51
CEM	3	\$BMI	108.91
ST	14	\$F	46.69





LOT 46



LOT 45

Lot  
45

### CCS ROSEMARY 21J

\*4322608 | OPEN HEIFER | 2/21/21 | SH100 | HORNED | ROAN | CCS DC21J

CSF EVOLUTION HC  
**CCS ONWARD 121E**  
 CCS STYLISH GIRL 110Z  
 SULL RED REWARD 9321  
**SULL ROSE MARY 5024 ET**  
 SULL ROSE MARY 636-4 ET CL

CED	7	YG	-0.45
BW	2.7	CW	-2
WW	54	REA	0.44
YW	86	MB	-0.07
MK	28	FAT	-0.1
TM	55	\$CEZ	22.18
CEM	2	\$BMI	125.26
ST	11	\$F	53.99

Birth Wt: 73

There has been a lot discussion about selling this daughter of CCS Onward, and not retaining her in the herd. But, we want the buyer to get the a chance to purchase our best. Her dam by Red Reward, going back to Desert Rose 004 has been a very strong producer. Her dam has produced both bulls and females working in Shorthorn herds. Land Of Lincoln Eligible. CHV

Lot  
46

### CCS DIANE DOLLY 44J

\*X4322596 | OPEN HEIFER | 4/4/21 | SH100 | POLLED | RWM | CCS DC44J

CS STARMARKER CS381A  
**JA SP GALE FORCE SM 6J54**  
 JA RED MEG 3J13 ET  
 KOLT KANE NITRO 133Y  
**CCS DIANNE DOLLY 35E**  
 CCS DIANNE DOLLY 45C

CED	10	YG	-0.35
BW	0.1	CW	-7
WW	28	REA	0.22
YW	54	MB	-0.05
MK	21	FAT	-0.09
TM	35	\$CEZ	37.97
CEM	3	\$BMI	85.8
ST	10	\$F	41.58

Birth Wt: 69

This April daughter of Gale Force is truly an eye catcher. A heifer that profiles beautifully with the center rib capacity and is very mobile when she is on the move. The cow family behind her is without a doubt the strongest at Cagwin Farms, having generated many good show heifers. Land Of Lincoln Eligible. CHV





Lot 47		CCS CHERRIE SODA 52J	
*X4322595		OPEN HEIFER   5/2/21   SH100   POLLED   R/W   CCS DC52J	
SULL RED POWER 6971D		CED 8	YG -0.39
<b>CCS POWER STROKE 211G</b>		BW 3.4	CW 3
CCS ROSEWOOD 915V		WW 55	REA 0.43
SASKVALLEY OUTLAW 173Z		YW 83	MB -0.03
<b>CCS CHERRI SODA 307G</b>		MK 22	FAT -0.09
CCS CHERRI SODA 130E		TM 50	\$CEZ 25.53
		CEM 4	\$BMI 124.79
		ST 13	\$F 54.36

Birth Wt: 71

Here is a May heifer that is truly stout and full of performance, nice hiped, good front with tons of center rib. Her sire CCS Power Stroke, our Jr herd sire did a very nice job siring calves that are light birth weight and very uniform. Power Stroke was purchased in 2020 by Jason and Tasha Bunting for their herd use. And has proven to be a strong herd sire on their herd. Her dam by Outlaw is a 1st calf heifer that descends back to the Cherri Soda 24B cow. That Bill Fugate purchased from us in the 2017 Leveldale sale. Land Of Lincoln Eligible. CHV



Lot 48		CCS RED ROSEMARY 32J	
*X4322606		OPEN HEIFER   3/2/21   SH100   POLLED   RED   CCS DC32J	
SULL RGLC LEGACY 525 ET		CED 6	YG -0.37
<b>SULL PROPEL 7187E ET</b>		BW 3.1	CW -10
HD RUBY 903		WW 55	REA 0.21
SULL RED REWARD 9321		YW 84	MB -0.09
<b>SULL RED ROSEMARY 5074 ET</b>		MK 36	FAT -0.09
SULL RED ROSEMARY -3 ET CL		TM 63	\$CEZ 19.22
		CEM 0	\$BMI 127.03
		ST 13	\$F 53.55

Birth Wt: 78

The Red Rosemary 5074 cow has been a very strong producer. Having produced herd bulls that are working in herds in Texas and Alabama. This March daughter of Propel in no exception. Propel progeny have been high sellers in the Schrag 605 production sales. She is long front, tremendous top and the femininity needed to become a top-notch show heifer. Land Of Lincoln eligible. CHV



Lot 49		CCS/LIC MYRTLE 321J	
*X4322618		OPEN HEIFER   3/21/21   SH100   POLLED   RWM   CCS DC321J	
SASKVALLEY INNOVATION 131X		CED 9	YG -0.32
<b>SASKVALLEY OUTLAW 173Z</b>		BW 1.6	CW 4
STAR P JODY ROSE 5X		WW 46	REA 0.37
CCS BOLD 26C ET		YW 69	MB -0.03
<b>HF HIGHLAND MYRTLE 827</b>		MK 24	FAT -0.07
HIGHLAND MYRTLE 416		TM 46	\$CEZ 32.26
		CEM 3	\$BMI 114.52
		ST 14	\$F 49.69

Birth Wt: 63

A fancy show prospect by Outlaw, the sire of many top-quality females for the Jungels firm and now for Hugh Mooney in California. She has that maternal look and is super feminine. She is sound in her structure and will be a great brood cow after her show career. On her dam's side she has the Maine influence. This one PUPPY DOG TAME. She is an excellent choice for a young showman. Land Of Lincoln eligible. DSC. CHV



**Lot 50**  
**\*KAR4322662** | OPEN HEIFER | 4/21/21 | AR50 | POLLED | BLUE ROAN | CCS DC45J

**CCS ERICA 45J**

CF SOLUTION X ET  
**SULL GNCC ASSET ET**  
 K-KIM MONA LISA 35L ET  
 SLC SOONER 101M  
**JSUL ERICA 2301**  
 KS ERICA 36T

CED	8	YG	-0.49
BW	2.6	CW	4
WW	55	REA	0.66
YW	86	MB	-0.05
MK	15	FAT	-0.1
TM	43	SCEZ	25.21
CEM	3	\$BMI	119.29
ST	2	\$F	54.78

Birth Wt: 69

If you are looking for a blue roan show heifer that will truly make a beef cow, here she is. This sleek front big hipped female gives the extra look needed to compete in the show ring and the pasture. Her dam is a 7/8 Maine-Anjou, by Sooner, that has never missed breeding her Shorthorn. CHV



**Lot 51**  
**\*KAR4322660** | OPEN HEIFER | 2/4/21 | AR75 | POLLED | BWM | CCS DC24J

**CCS DREAM LADY 24J**

CF SOLUTION X ET  
**SULL GNCC ASSET ET**  
 K-KIM MONA LISA 35L ET  
 READY 2 RUMBLE  
**CYT DREAM LADY 532C ET**  
 CYT DREAM LADY 420-2 ET

CED	1	YG	-0.43
BW	6.3	CW	-2
WW	51	REA	0.48
YW	82	MB	0.02
MK	15	FAT	-0.09
TM	41	SCEZ	2.35
CEM	-4	\$BMI	90.88
ST	8	\$F	52.74

Birth Wt: 84

The Dream Lady cow family needs introduction to the Shorthorn Breed. This ¾ Shorthorn Plus heifer is a true complement to any Shorthorn program. Being by SULL-GNCC Asset gives the extra eye appeal and performance to make her very competitive in the show ring. CHV



**Lot 52**  
**X4322615** | STEER | 2/17/21 | SH100 | POLLED | WHITE | CCS DC217J

**CCS FIREBALL 217J**

HILL HAVEN FIRE STORM 28C  
**MILLBROOK FIREBALL 23F**  
 MILLBROOK DAISY'S PRIDE 18X  
 SASKVALLEY UNIQUE 335U  
**LEVELDALE CASSANDRIA 260Z**  
 LEVELDALE CASSANDRIA 946W

CED	12	YG	-0.27
BW	0	CW	-3
WW	41	REA	0.07
YW	58	MB	-0.01
MK	22	FAT	-0.08
TM	42	SCEZ	45.23
CEM	6	\$BMI	118.87
ST	14	\$F	47.63

Birth Wt: 71

This Fireball steer is a very thick, big topped, thick quartered heavy muscled steer. After the untimely death of Fireball, we may have should of left him a bull. Very good natured calf. Ready for any showman. Land of Lincoln Eligible.





Welcome to the BSG portion of the Leveldale INVESTMENT Sale.

We are extremely honored and very humbled that Dr. Les would ask us to be a part of this historic event. October 30th is going to be a great day for the Shorthorn breed as some of the most genetically profitable cattle in existence (and in history) sell in Mason City. All the consignors here are dedicated to their craft and pay attention to the needs of not only their customers, but the breed as a whole.

Like Leveldale and other consignors, we are stewards of this line of cattle, we have done everything in our power to manufacture cattle that calve on their own, grow fast, stop growing shortly after yearling, flesh easy & generate muscle on fescue, and raise a heavy calf off of a perfectly designed udder—and do it year after year. But the additives to this equation are that the cattle must be attractive enough to market in the Midwest; femininity, structural integrity, dependable cow families and docility are super important to us too. Breeding for balance takes time and effort to make a plan, stick to it, forecast your matings and invest in the proper genetics. We're proud of that hard work.

We are offering the center cut of the next generation of BSG. We have absorbed every expense of rearing and breeding these females, you take them home calve them out and reap every dollar she generates; that's why bred heifers are considered the best investment in the business from a dollars and cents standpoint. The three 2-year old's are only offered because we wanted to share the influence of some of the Leveldale bulls, like Rushmore and Taylor Made. They have calved and have proven to do their job. You get something special with each one. In fact, you'll find arguably the best young, in-production cow from Greens Fork in this group.

We stepped up and played hard on a young bull this spring that excites as any other young sire in some time. RONAN is an outcross to our genetics and most gene pools in the breed. He is as naturally thick with substantial lower quarter, soft made and deep flanked as any calving ease bull we have discovered. Now a roster member at Cattle Visions, this A.I. power house's first calves are being carried by the bred heifers in this sale.

Finally, we can't say about our INVESTMENT in Rushmore from Leveldale. You'll see more notes about this STUD in the semen section of this book, but consider his genetic offering, several wise cowboys have sampled him already.

Onward,  
Phillip Bowman & Family



**JSF RONAN 5H**

NEW BSG Herdsire  
Service Sire to the BSG Breds Selling.

**PRACTICAL IDEAS. PRACTICAL CATTLE.**



**BOWMANSUPERIORGENETICS.COM**







Dam - Waukaru Lassie 2024



LOT 54



LOT 53



Dam - YY Bree Eloise 441B ET

lot  
53

### BSG ELOISE 1973 OF 268B

X4300590 | COW | 10/1/19 | SH100 | POLLED | ROAN | BSG 1973

SASKVALLEY ULTRA 12J  
SASKVALLEY BANJO 268B  
SASKVALLEY MAGGIE 73R  
DRC 101VM  
YY BREE ELOISE 441B ET  
DRC7119KL

CED	11	YG	-0.33
BW	0.6	CW	6
WW	53	REA	0.39
YW	84	MB	-0.25
MK	26	FAT	-0.08
TM	53	\$CEZ	35.37
CEM	6	\$BMI	124.72
ST	17	\$F	51.11

Birth Wt: 85

PE'd to JSF RONAN 5H, due March 12, 2022.

The "Queen Bee" of the replacement pen. Sappy made, loose structured, ultra-sound and a true grass converting machine all describe Eloise 1973. If you want a power cow that can define maternal look and is slated to be a bull making extraordinaire, here she is. Her mother, a BSG donor, was our pick of the entire YY herd in western Montana a few years ago and we honor this outcross cow family by offering 1973 to the public.

lot  
54

### BSG LASSIE 2014 OF 15A ET

X4300460 | COW | 2/19/20 | SH100 | POLLED | RED | BSG 2014

SASKVALLEY TRADITION 106T  
MURIDALE THERMAL ENERGY 15A  
MURIDALE GOOSE 32R  
WAUKARU GOLD CARD 5042  
WAUKARU LASSIE 2024  
WAUKARU LASSIE 9169

CED	12	YG	-0.3
BW	1.9	CW	38
WW	62	REA	0.8
YW	104	MB	0
MK	32	FAT	-0.07
TM	64	\$CEZ	33.71
CEM	8	\$BMI	141.67
ST	16	\$F	59.39

Birth Wt: 90 | 205 Day Wt: 544

AI'd to JSF RONAN 5H, due February 13, 2022.

Retaining the right to one successful flush with a minimum of 6 embryos. If you were to ask who the top dollar generators from the BSG program have been over the last decade, the sire and dam of this gal would certainly come up in conversation. This is a combination of two breed leading individuals who still do it on foot with their perfect type & kind, on paper with their freaky data sets and in the pasture with their production of daughters like 2014 and is timeless. Count on this one to enter the donor pen wherever she goes. This is the kind of Shorthorn the industry needs more of. Congrats to the new owner.





Lot  
55

## BSG CHERRY 2021 OF 15A

\*X4300496 | COW | 2/23/20 | SH100 | POLLED | RED | BSG 2021

SASKVALLEY TRADITION 106T  
MURIDALE THERMAL ENERGY 15A  
MURIDALE GOOSE 32R  
SASKVALLEY BLITZ 66B  
BSG CHERRY 1745 OF 66B  
BSG CHERRY 1525 OF 137W

CED	11	YG	-0.31
BW	3.1	CW	18
WW	58	REA	0.53
YW	94	MB	0.2
MK	30	FAT	-0.07
TM	59	\$CEZ	32.21
CEM	8	\$BMI	140.14
ST	18	\$F	59.53

Birth Wt: 93 | 205 Day Wt: 639 | 365 Day Wt: 928

PE'd to JSF RONAN 5H, due March 12, 2022.

A ridiculous pedigree full of flat-out good beef cattle. Start by diving to the bottom of her pedigree, it's got Cherry 140, a donor at a 2,500 commercial cow operation in the deep south and Cherry Rub 963, one of the best females we ever sold to Kathryn, ND; top that with Gauge, Blitz and Thermal Energy and we present to you one of the best we've built. Manufactured for quality and top dollar generation, she ranks in the Top 4% for the two most important numbers on a registration paper, \$BMI & \$F. Stockmen, look in at this momma cow deluxe—and did we mention her carcass traits?—Where can you find data like that? Females like this make A.I. sires. (Shaking my darn head)



Lot  
56

## BSG ADELAIDE 2023 OF 15A

\*X4300497 | COW | 2/25/20 | SH100 | POLLED | RWM | BSG 2023

SASKVALLEY TRADITION 106T  
MURIDALE THERMAL ENERGY 15A  
MURIDALE GOOSE 32R  
SASKVALLEY TASK FORCE 105T  
BSG ADELAIDE 5109 105T  
JSF ADELAIDE 31U

CED	14	YG	-0.34
BW	0.9	CW	7
WW	55	REA	0.54
YW	82	MB	-0.02
MK	33	FAT	-0.06
TM	60	\$CEZ	44.36
CEM	9	\$BMI	150.07
ST	24	\$F	54.79

Birth Wt: 88 | 205 Day Wt: 622 | 365 Day Wt: 888

PE'd to JSF RONAN 5H, due March 27, 2022.

Another lovely Thermal Energy daughter backed by the tried-and-true Adelaide cow family. Maternal sister to the high selling bred heifer in our last Form to Function Sale. If you study her pedigree you're really going to like how she is bred. Moderate in size, deep flanked, and plenty of rib shape just like all the females before her in that blood line. Being over 150 for \$BMI marks her as one of the breeds most maternal females in her age group and we are selling 100% of her to you. We love the very few Adelaide's we have around and we know if you have this cow family in your herd you know their value too.



Lot  
57

## BSG SLEW 2026 OF EZ ET

X4300561 | COW | 2/28/20 | SH100 | POLLED | ROAN | BSG 2026

KINNABER LEADER 6TH  
COALPIT CREEK LEADER 6TH ET  
HHFS IMPOSSIBLE DREAM  
MURIDALE BUSTER 14K  
MURIDALE ROAN SUE 16N  
MURIDALE CUJO SLEW DOWN 3D

CED	15	YG	-0.46
BW	-2.1	CW	-11
WW	36	REA	0.26
YW	59	MB	0.08
MK	29	FAT	-0.12
TM	47	\$CEZ	52.99
CEM	12	\$BMI	137.29
ST	17	\$F	47.72

Birth Wt: 82 | 205 Day Wt: 574 | 365 Day Wt: 912

PE'd to JSF RONAN 5H, due March 27, 2022.

Beautiful dark roan female with a wonderful attitude. Resulting as an embryo purchased out of western Canada, Slew 2026 is by our pick of the donor cows in the Muridale program. This heifer is so elegant in her design and long bodied and level hiped. She strides extremely well. Her mating to RONAN promises success. Also, we can't say enough about the Coalpit Creek Leader 6th daughters, that's why we have gone back and used him again in recent years. They are the good Durham-type Shorthorns that built this breed and we sure want more of them. But we committed to Les to sell our very best so we offer Slew 2026.





LOT 59



LOT 58

lot  
58

### BSG DAFFODIL 2057 OF 15A

X4301629 | COW | 4/3/20 | SH100 | POLLED | ROAN | BSG 2057

SASKVALLEYTRADITION 106T  
MURIDALE THERMAL ENERGY 15A  
MURIDALE GOOSE 32R  
SASKVALLEY STAMPEDE 128S  
BSG DAFFODIL 1669 OF 128S  
GAR-LIND DAFFODIL 48X

CED	12	YG	-0.26
BW	2.2	CW	2
WW	46	REA	0.23
YW	71	MB	0.21
MK	26	FAT	-0.06
TM	49	\$CEZ	40.94
CEM	8	\$BMI	127.87
ST	16	\$F	52.84

Birth Wt: 80 | 205 Day Wt: 536 | 365 Day Wt: 720

PE'd to JSF RONAN 5H, due March 12, 2022.

A pedigree that's 100% western Canadian, asterisk-free, and full of superior stock from the most successful herds in Saskatchewan and Alberta in recent memory. Muridale, Saskvalley, Alta-Cedar and Gar-Lind. Top that with a 'changer' like RONAN and you have a mating that makes this Shorthorn business a lot of fun. If the best ones are built from the ground up, take a hard look at Daffodil 2057, ideal foot and heel design, excellent skeletal structure and super maternal design. I can see this one as a cow people will point out when they make pasture visits; she is so hardy and yet so elegant and feminine. The good cowboys will find 2057 fast.

lot  
59

### BSG VICKY 2068 OF 15A

\*X4305304 | COW | 5/10/20 | SH100 | POLLED | RED | BSG 2068

SASKVALLEYTRADITION 106T  
MURIDALE THERMAL ENERGY 15A  
MURIDALE GOOSE 32R  
SASKVALLEY BLITZ 66B  
BSG VICKY 1728 OF 66B  
BSG VICKY 1519 OF 7Y

CED	15	YG	-0.37
BW	1.3	CW	0
WW	50	REA	0.48
YW	81	MB	-0.08
MK	26	FAT	-0.07
TM	51	\$CEZ	48.82
CEM	10	\$BMI	135
ST	20	\$F	52.06

Birth Wt: 86

PE'd to JSF RONAN 5H, due March 17, 2022.

Another tremendous Thermal Energy x Blitz cross. If you follow cow families much, you know the greatness the Vicky cow family has generated over the years at Jungels' in North Dakota—and they did it the blue-collar way—no frills, just solid, functional, dependable stock. Tracing back to Vicky 0426C herself destined 2068 to be a leading power cow in any herd in America. She's got calving ease built in. Hold tight to this one if you're the successful bidder, she'll make your next herd sire.





Lot  
60

## BSG KILLIAN ROSE 1926 15A

X4284711 | COW | 3/6/19 | SH100 | POLLED | RWM | BSG 1926

SASKVALLEY TRADITION 106T  
MURIDALE THERMAL ENERGY 15A  
MURIDALE GOOSE 32R  
DRC 101VM  
BSG KILLIAN ROSE 4113 DVR  
NPS KILLIAN ROSE 842 X

CED	10	YG	-0.37
BW	0.2	CW	3
WW	48	REA	0.38
YW	72	MB	-0.06
MK	30	FAT	-0.09
TM	53	\$CEZ	32.56
CEM	5	\$BMI	127.66
ST	20	\$F	50.6

Birth Wt: 94 | 205 Day Wt: 535 | 365 Day Wt: 766

AI'd to Studer's Taylor Made 7Y on May 22. PE'd to Leveldale Rushmore 864F to September 1, 2021. Confirmation of service sire available sale day. Here is a good, solid young cow that many will find on sale day. Her pedigree combines two very influential breed legends, Goose 32R and Rose T90. She weaned off one of the nicest keeper heifers and we know she can do the same for you with her mating to Rushmore.



Lot  
61

## BSG RAINBOW ROSE 1933 268B

X4284713 | COW | 3/10/19 | SH100 | POLLED | RWM | BSG 1933

SASKVALLEY ULTRA 12J  
SASKVALLEY BANJO 268B  
SASKVALLEY MAGGIE 73R  
STUDER'S TAYLOR MADE 7Y  
BSG RAINBOW ROSE 1715 OF 7Y  
BSG RAINBOW ROSE 1470 BZ

CED	11	YG	-0.35
BW	1	CW	5
WW	42	REA	0.43
YW	54	MB	0
MK	23	FAT	-0.08
TM	44	\$CEZ	42.32
CEM	6	\$BMI	130.16
ST	23	\$F	47.9

Birth Wt: 79 | 205 Day Wt: 476 | 365 Day Wt: 699

AI'd to Studer's Taylor Made 7Y on May 22. PE'd to Leveldale Rushmore 864F to September 1, 2021. Confirmation of service sire available sale day. A beautiful, super maternal Banjo daughter out of one of the best Taylor Made's we ever laid eyes on; now owned by the Nicodemus family of Indiana, we weren't thrilled to let 1715 go. If you want feed-efficient moderate size, extra rib and a perfect udder you're going to want to put a star next to 1933. We hope she's settled to Taylor Made; line breeding that sire is something we want to do more of in our program.

Dam - BSG Rainbow Rose 1715 of 7Y



Lot  
62

## BSG MIGA 1939 OF 66B

X4284724 | COW | 3/20/19 | SH100 | POLLED | RED | BSG 1939

JT TRANS X 28X  
SASKVALLEY BLITZ 66B  
SASKVALLEY DANDY 340Z  
STUDER'S TPS UNLIMITED 7A  
DSF MIGA 25D  
MURIDALE MIGA 21A

CED	12	YG	-0.42
BW	1.3	CW	4
WW	44	REA	0.45
YW	66	MB	-0.2
MK	20	FAT	-0.1
TM	42	\$CEZ	43.16
CEM	10	\$BMI	126.35
ST	20	\$F	47.35

Birth Wt: 84 | 205 Day Wt: 482 | 365 Day Wt: 688

AI'd to Studer's Taylor Made 7Y on May 22. PE'd to Leveldale Rushmore 864F to September 1, 2021. Confirmation of service sire available sale day. The best of our young cows comes to you as Miga 1939. She is an absolute jaw-dropper. So fleshy, so deep and thick and wide. The kind of Shorthorn that would make any great stockman proud to own. Hey, Dale Studer- heard of this cow line? Ask Mr. Studer about how solid this female is from the bottom of her pedigree. A little sad to sell this one...





## SILENT AUCTION ITEM - LASSIE DOLL

Donated by Peggy Neal,  
Illinois Shorthorn Lassie  
Queen 1966  
Proceeds of the Lassie Doll will  
go to the IL Shorthorn Lassies.



## MEALS

### OUR MEALS WILL FEATURE LEVELDALE BEEF PREPARED BY ECHO VALLEY MEATS

Echo Valley Meats made a 2 time appearance on ABC's show "Shark Tank". During his first appearance, he flew to Los Angeles, California, gave his "Pitch," and impressed producers enough to make it to the show. Though he didn't secure a deal, the "Sharks" loved his meat products, authenticity, and enthusiasm. In 2014 Dave received the invitation for a return visit to "Shark Tank," where he had the rare opportunity for a second pitch to the Sharks during Season 6. This time he secured a deal with billionaire investor, Mark Cuban, making Dave the only entrepreneur in the show's history to pitch the same business successfully the second time around. Echo Valley Meats is a growing success because of common sense judgment, hard work, leading by example, giving back to the community and above all, finding passion in life.



## ENTERTAINMENT FRIDAY NIGHT

Friday, October 29  
Social & Evening  
entertainment by GD Country.



Peak View Ranch is as always, honored to be part of the Leveldale investment sale. The Leveldale program with both Les and Laura stewarding it, is unquestionable in its integrity. While Leveldale Boardwalk producing multiple national champions for Cates Farms has been very obvious, Leveldale has quietly put genetics all around the country that have improved operations and elevated the Shorthorn Breed. Les has an excellent eye for the structural integrity of cattle combined with an unwavering commitment to raise high performing trouble free cattle with real world relevance that isn't found everyday.

Bowman Superior Genetics has consistently demonstrated a superiority in the cattle they produce to marble and garnish premiums on the rail that very few can compete with. These advantages have been well documented in multiple ASA trials over the years.

Cagwin Farms bring a rich history and quality found in the Shorthorn breed that few can offer. They have been intricately involved in the breed for many years and raise animals finding their way to the winners circle but still holding fast to cattle that are functional, fertile, and sound. Many breed greats have found their origin with Cagwin Farms.

Peak View Ranch is offering fall and spring born heifers, some of which have already won championships, for youth exhibitors that are gentle, show broke and ready to take out and enjoy. They are backed by a trouble free production oriented herd that is profitable to own that was established with John and Virginia Leone in 1977. We have challenged ourselves to combine pedigrees in unique ways with no boundaries to quality or performance. The bred heifers we offer will undoubtedly exceed expectations for their new owners.

This year we celebrate our breeds rich history of 150 years in America and what a celebration that is. In recent years, Shorthorn cattle have demanded so much attention and been so sought after. Come and join us, as we offer some of our best and celebrate our rich history in the breed and cattle production and be part of the Leveldale Investment Sale.

Peak View Ranch  
Rick, Trish, Gabri, and Val Leone  
Graham Ormiston, herdsman

*A Brand*  
TO TRUST



PEAKVIEWRANCH.COM

PVR  
FOWLER, CO



Lot  
63

## PEAKVIEW CAROLINA 44820

\*X4310553 | OPEN HEIFER | 10/10/20 | SH100 | POLLED | RWM | PEAKVIEW 44820

SULL RGLC LEGACY 525 ET  
PEAKVIEW MARKSMAN 81644

MAV EMILY 510C ET

JA COMMOTION HC QJ04

RGLC ROXY 606

SULL MYSTIC MYRTLE 0504 ET

Birth Wt: 73

Peak View Caroline is another strong Marksman consignment. Her dam is from Rocking G and was no stranger to success. Caroline is another fall born with 2 years of eligibility to show that is turning heads in the show barn. She is beautifully fronted and gentle and would be great for the most novice showman.

CED	8	YG	-0.35
BW	2	CW	-7
WW	40	REA	0.18
YW	57	MB	-0.06
MK	22	FAT	-0.09
TM	42	SCEZ	30.34
CEM	2	\$BMI	106.97
ST	11	\$F	46.2



Dam - RGLC Roxy 606

Lot  
64

## PEAKVIEW LULU 11720

\*X4309009 | OPEN HEIFER | 9/25/20 | SH100 | POLLED | ROAN | PEAKVIEW 11720

SULL RGLC LEGACY 525 ET  
PEAKVIEW MARKSMAN 81644

MAV EMILY 510C ET

CF PRIMO X ET

PEAKVIEW LITTLE LOU 42817

PEAK VIEW LITTLE WHITE LIE

Birth Wt: 69

Peak View Lulu is a September born Marksman daughter out of a CF Primo female that was part of a division win as a pair and stood second in the owned and bred and owned class at junior nationals in Wisconsin. Lulu was shown at the Breed Bash and was named Champion Shorthorn this summer. She is gentle and show broke and still has two years of eligibility to show. Her sire was named Reserve Champion Shorthorn bull in Fort Worth and carries Legacy and Charisma in his pedigree. Please take a close look at this female if you are looking for a junior heifer to exhibit.

CED	9	YG	-0.4
BW	1.4	CW	-2
WW	42	REA	0.36
YW	60	MB	-0.03
MK	26	FAT	-0.09
TM	47	SCEZ	33.47
CEM	2	\$BMI	119.7
ST	11	\$F	47.92



Dam + Granddam

Lot  
65

## PEAKVIEW AUSTIN 45021

\*X4318774 | OPEN HEIFER | 4/16/21 | SH100 | POLLED | RED | PEAKVIEW 45021

SULL RED VALUE 5011 ET  
PEAKVIEW RIFLEMAN 1805 ET

MFS MFS LADY LUCK 17C

LEVELDALE RINGO 337A

LEVELDALE MOET 734E

PEAKVIEW MOET P2F 23710

Birth Wt: 91

Peak View Austin is an April daughter from a Ringo female we purchased at the Leveldale sale several years ago. Austin is a great example of what Leveldale females can do when they go into production. She is a high growth individual offering great performance and combines eye appeal that is exciting to see when combined with performance-oriented cattle.

CED	5	YG	-0.41
BW	3.2	CW	-8
WW	46	REA	0.26
YW	70	MB	-0.13
MK	22	FAT	-0.1
TM	45	SCEZ	18.29
CEM	1	\$BMI	105.56
ST	17	\$F	48.56



Sire - Peakview Rifleman





Man Among Boys



Sire - Peakview Marskman



Past High Seller - Leveldale Rosewood 809U



Sire - SRV Quiet Man



Lot  
66

## PEAKVIEW HAWAII 45721

\*XAR4318560 | OPEN HEIFER | 4/13/21 | AR75 | POLLED | RED | PEAKVIEW 45721

SULL RED REWARD 9321  
PEAKVIEW WATCHMAN 1806 ET  
MFS LADY LUCK 17C  
MAN AMONG BOYS  
PEAKVIEW AR 29817  
PEAK VIEW AR19609

CED	9	YG	-0.36
BW	0.8	CW	-1
WW	42	REA	0.42
YW	65	MB	0.05
MK	18	FAT	-0.07
TM	38	\$CEZ	31.37
CEM	4	\$BMI	106.23
ST	10	\$F	48.85

Birth Wt: 85

Peak View Hawaii is a plus female that could contribute a lot to a purebred operation or plus program, especially someone producing steers. She is a granddaughter of MAB and typifies the success crossed with Shorthorn genetics. This April heifer is stout and sound and waiting to make some of the Shorthorn plus steers creating so much excitement in the club steer world. All the heifers are halter broke and gentle and ready to go on for any youth exhibitor. Someone will have fun with this gal.

Lot  
67

## PEAKVIEW RAINDROP 50221

\*X4317218 | OPEN HEIFER | 3/8/21 | SH100 | POLLED | RWM | PEAKVIEW 50221

SULL RGLC LEGACY 525 ET  
PEAKVIEW MARKSMAN 81644  
MAV EMILY 510C ET  
SULL RGLC LEGACY 525 ET  
PEAKVIEW RAINDROP 43219  
PEAK VIEW RAINDROP 29416

CED	7	YG	-0.31
BW	1.6	CW	2
WW	52	REA	0.21
YW	74	MB	0.11
MK	26	FAT	-0.09
TM	52	\$CEZ	24.94
CEM	1	\$BMI	124.30
ST	13	\$F	54.29

Birth Wt: 90

Peak View Raindrop is that stand out heifer that posts an excellent EPD profile but can compete with the best of show heifers. She is a line bred Legacy female that will offer an amazing outcross potential with the most popular show ring genetics but is also above breed average for WW YW, and marbling to name a few. She is also extremely gentle, halter broke, and ready for a youth to fully enjoy exhibiting Shorthorn cattle. Take a close look at her if you are shopping for a great youth breeding and show prospect.

Lot  
68

## PEAKVIEW PAINTED LADY LUCK 47221

\*4317608 | OPEN HEIFER | 3/20/21 | SH100 | HORNED | RWM | PEAKVIEW 47221

BYLAND MISSION 6RD112  
PEAK VIEW MOET P1M 6001 ET  
DRC 786T1  
SULL RED REWARD 9321  
PEAKVIEW PAINTED LADY LUCK 1807 ET  
MFS LADY LUCK 17C

CED	9	YG	-0.39
BW	0.2	CW	-9
WW	41	REA	0.15
YW	61	MB	-0.22
MK	24	FAT	-0.11
TM	44	\$CEZ	34.18
CEM	1	\$BMI	108.86
ST	16	\$F	45.31

Birth Wt: 78

Peak View Painted Lady Luck is a daughter of Peak View Mo. "Mo" sired the high selling mature female in the Leveldale sale several years in a row. One of those daughters went on to be a donor for Sullivan Farms. This female combines Red Reward with some of the Dover genetics that have added so much to the operations that seized the rare opportunity to incorporate them into their operations. Here is that same opportunity.

Lot  
69

## PEAKVIEW DAKOTA 34621

\*XAR4317612 | OPEN HEIFER | 3/21/21 | AR87.5 | POLLED | ROAN | PEAKVIEW 34621

3BC HARD ROCK 1498  
SRV QUIET MAN  
CHSC ELEGANT QUEEN  
PEAK VIEW MOET P1M 706 ET  
PEAK VIEW AR17511  
PEAK VIEW AR091

CED	7	YG	-0.22
BW	3.2	CW	0
WW	48	REA	0.19
YW	75	MB	0.23
MK	20	FAT	-0.05
TM	44	\$CEZ	24.74
CEM	3	\$BMI	106.75
ST	14	\$F	53.64

Birth Wt: 90

Peak View Dakota is a Quiet Man daughter with a marbling EPD of .23. These high marbling genetics were identified in the Iowa State heifer trial coordinated by the ASA. This is a great opportunity to combine popular genetics in show steer production with added phenotype for the performance-oriented producer. The cattle that can perform in multiple disciplines are quickly establishing themselves as the standard to compete against. This is an example of value in Shorthorn breeding cattle on several fronts.



Lot  
70

## PEAKVIEW LADY LUCK 47420

\*X4300347 | COW | 3/3/20 | SH100 | POLLED | RED | PEAKVIEW 47420

SULL RED REWARD 9321  
TURNERCRH DECEPTION 2  
K-KIM MEG 270N ET  
SULL RED REWARD 9321  
PEAKVIEW LADY LUCK 1801 ET  
MFS LADY LUCK 17C

CED	6	YG	-0.49
BW	0.6	CW	-11
WW	43	REA	0.28
YW	61	MB	-0.07
MK	24	FAT	-0.13
TM	45	\$CEZ	23.90
CEM	2	\$BMI	117.61
ST	8	\$F	47.86

Birth Wt: 84 | 205 Day Wt: 525

Lady Luck is an outstanding Deception daughter. We hate to part with this female as deception daughters have proven to be pivotal females for us. They combine easy fleshing, dystocia free production, with outstanding eye appeal. She is bred to Peak View Watchman for an April calf. Watchman has proven like many red Reward sons to be very easy calving with low birth weights and simultaneously able to produce show heifers and beautiful daughters when put in production.



Sire - Deception

Lot  
71

## PEAKVIEW AR 34620

\*AR4300846 | COW | 3/17/20 | AR87.5 | HORNED | ROAN | PEAKVIEW 34620

3BC HARD ROCK 1498  
SRV QUIET MAN  
CHSC ELEGANT QUEEN  
PEAK VIEW MOET P1M 706 ET  
PEAK VIEW AR17511  
PEAK VIEW AR091

CED	7	YG	-0.21
BW	3.7	CW	-1
WW	48	REA	0.15
YW	75	MB	0.23
MK	20	FAT	-0.05
TM	44	\$CEZ	22.00
CEM	3	\$BMI	104.59
ST	14	\$F	56.61

Birth Wt: 93 | 205 Day Wt: 508

This beautiful bred has been a stand out since she hit the ground. When we produced the steers for the NWSS catch a calf we selected some white Shorthorn sires to create color and quality, two of the many things Shorthorns do so well. Quiet man was an easy choice for the project but we didn't anticipate how exceptional the females would be. This appendix female will produce a purebred calf mated to PVF Justice on June 10th 2021 for a March 22nd calf. Justice has an excellent EPD profile for growth and marbling. This mating will be a potential trait leader for marbling.



Service Sire - PVF Justice

Lot  
72

## PEAKVIEW FARAH 40420

\*X4300903 | COW | 3/18/20 | SH100 | POLLED | RED | PEAKVIEW 40420

LITTLE CEDAR AVIATOR 503X  
5J VIPER 118C ET  
MR ADELAIDE 68K  
HILL HAVEN BOLD 4X  
CCS FARAH 328C  
CCS FARAH 120Z

CED	7	YG	-0.37
BW	1.7	CW	-12
WW	42	REA	0.19
YW	60	MB	0.03
MK	22	FAT	-0.09
TM	43	\$CEZ	27.28
CEM	1	\$BMI	110.36
ST	14	\$F	48.56

Birth Wt: 90 | 205 Day Wt: 474

Farah is a 5J Viper daughter from a heifer we bought at the Leveldale Sale several years ago. She is bred to Ultimate Reward and this mating besides being easy calving could be very exciting for the owner when she calves. She is due March 13th.



Service Sire - CF S/F Ultimate Reward

Lot  
73

## PEAKVIEW AR 43420

\*XAR4300847 | COW | 3/17/20 | AR87.5 | POLLED | ROAN | PEAKVIEW 43420

3BC HARD ROCK 1498  
SRV QUIET MAN  
CHSC ELEGANT QUEEN  
PEAK VIEW COMMANDER 23013  
PEAK VIEW AR 25316  
PEAK VIEW AR17608

CED	9	YG	-0.23
BW	0.7	CW	0
WW	37	REA	0.13
YW	61	MB	0.18
MK	20	FAT	-0.06
TM	38	\$CEZ	34.24
CEM	4	\$BMI	97.63
ST	16	\$F	48.12

Birth Wt: 78 | 205 Day Wt: 481

This is another Quiet man appendix female capable of producing purebred calves that also is bred to PVF Justice for a March 4th calf. The EPD profile is excellent on this female as well. She is as deep bodied and long and level in her hip as you would like. She can produce breeding cattle or club steers. This is the type of female producers around the country have so much fun making great club calves with.



Service Sire - PVF Justice





Boardwalk



Ringo



Quantico



Leveldale Rushmore 864F



Peakview Marksman 81644



Reload



Taylor Made

Lot  
SEMEN

## LEVELDALE BOARDWALK 530C \*X4228433

STUDER'S TAYLOR MADE 7Y X LEVELDALE BLOSSOM 230Z

Consigned by Leveldale Farms

**74A** 5 Units Conventional Semen **74B** 5 Units Conventional Semen

Lot  
SEMEN

## LEVELDALE RELOAD 660D ET X4242968

MURIDALE JAXSON 4A X LEVELDALE ROSEWOOD 809U

Consigned by Leveldale Farms

**75A** 5 Units Conventional Semen **75B** 5 Units Conventional Semen

Lot  
SEMEN

## LEVELDALE RINGO 337A X4206214

STUDER'S TAYLOR MADE 7Y X LEVELDALE ROSEWOOD 809U

Consigned by Leveldale Farms

**76A** 5 Units Conventional Semen **76B** 5 Units Conventional Semen

Lot  
SEMEN

## STUDER'S TAYLOR MADE 7Y \*X4176051

SASKVALLEY RAMROD 155R X DSF COUNTRY DANCER 42U

Consigned by Leveldale Farms

**77A** 5 Units Conventional Semen **77B** 5 Units Conventional Semen

Lot  
SEMEN

## ROYALLA QUANTICO J011 X4303731

ROYALLA NOSTALGIA X NARRALDA THELMA G128

Consigned by Leveldale Farms

**78A** 5 Units Conventional Semen **78B** 5 Units Conventional Semen

Shorthorn YOUTH  
DEVELOPMENT  
fund

Leveldale Farms is donating their highest selling Lot of 5 Units from the above lots to the Shorthorn Youth Development Fund.

Lot  
SEMEN

## LEVELDALE RUSHMORE 864F \*X4273393

LEVELDALE RELOAD 660D ET X LEVELDALE RHINESTONE 458B

Consigned by Bowman Superior Genetics

**79A** 5 Units Conventional Semen

**79B** 5 Units Conventional Semen

Rarely can one come across a sire that excels so well in balanced traits AND phenotype while being outcrossed pedigreed, but Rushmore does it, and does it really, really well. Being considerably higher than breed average for every single EPD and \$Value Index puts him in rare air among active sires in the Shorthorn population. But that's just icing on the cake. This stud sires bone, hip, top shape and balance like few on the market. We offer you limited semen on a sire so special to our program and who is also being pursued by some of the top breeders in Australia. INVEST in the best with Rushmore.

Lot  
SEMEN

## PEAKVIEW MARKSMAN 81644 \*X4269947

SULL RGLC LEGACY 525 ET X MAV EMILY 510C ET

Consigned by Peak View Ranch

**80A** 5 Units Conventional Semen **80B** 5 Units Conventional Semen



**America's First**  **EGG**  
INDUSTRY ASSOCIATION  
www.americegg.org

American Shorthorn Association



150  
YEAR ANNIVERSARY

1872  2022

*Maximizing*  
CELEBRATION AND HISTORY OF  
ASA, COATES & LEVELDALE

170<sup>TH</sup> ANNIVERSARY  
OF  
EVELDALE FARMS

**200<sup>TH</sup> ANNIVERSARY  
OF THE  
COATES HERD BOOK**



THE ORIGINAL SHORTHORN SAFARI



L. L. O'Brien is presented with a bronze statue of a Quaker woman by \$18,000 on when Larrabee-Corcoran, which he bought in the 1952 Mallory sale for \$18,000, was made major champion of the 1952 Mallory sale. In the picture is Mr. O'Brien, who made major champion of the 1952 Mallory sale. —Photo by Larrabee-Corcoran.



This picture of Lovelocke Smith was taken when he was the grand champion at Houston, Texas. The seller is Mrs. L. E. Mathers, 31 Judge Willett. Lovelocke is behind the ball.



Mr. and Mrs. L. E. Hartman, 2, Miami City, present with grand and reserve grand champion bunnies at the (N) Hunter club, Louisville, before Queen and Louisville Y. club.



**LEVELDALE**  
Investment Sale

WWW.LEVELDALE.COM



OCTOBER 30, 2021

**LEVELDALE**  
Investment Sale



*Headquarters  
for  
HERD  
BULLS*

Leveldale Richard, reserve  
grand champion bull, 1961  
Illinois State Fair, shown  
with (left to right) L. E.  
Mathers III, Lassie Queen,  
Diana Down, L. E. Mathers  
II, and Laura Mathers.

**L. E. MATHERS**

**L. E. MATHERS, JR.**

and

**L. E. MATHERS, III**

invite you

to the

# **LEVELDALE**

## *Investment Sale*

To be held at Leveldale Farms  
Mason City, Illinois

**Monday, November 6, 1961**